

RUNSHAW COLLEGE

SCHOOL LEAVERS'
PROSPECTUS

2024

**Begin
your
own**

*Runshaw
Story...*



Contents

Welcome to Runshaw	4
Runshaw Advantage	5
Additional Learning Support	8
Horizons Programme	9
Oxbridge Support	10
Top College for Sport	11
A Levels	12
Apprenticeships	52
Vocational	56
How to Apply	136
Important Information	137
How to get to Runshaw	138
Social Media	139

A Levels

3D Design	14
Accounting	15
Biology	16
Business Studies	17
Chemistry	18
Classical Civilisation	19
Computer Science	20
Core Mathematics	21
Criminology	22
Drama & Theatre Studies	23
Economics	24
Engineering	25
English Language	26
English Language & Literature	27
English Literature	28
Extended Project Qualification	29
Film Studies	30
Fine Art	31
Geography	32
Geology	33
Graphic Design	34
History	35
Law	36
Mathematics	37

Mathematics (Further)	38
Media Studies	39
Modern Foreign Languages	40
Music	41
Music Technology	42
Philosophy	43
Photography	44
Physical Education	45
Physics	46
Politics	47
Psychology	48
Religious Studies	49
Sociology	50
Textiles	51

Apprenticeships

Accounting, Business & Customer Service	52
Digital	52
Childcare & Teaching	52
Hospitality & Catering	52
Leadership & Management	52

Vocational & T Levels

Business	58
Computing & Digital	64
Engineering	72
Foundation Learning	78
Hair & Media Make-Up	84
Health, Social Care & Childhood Studies	88
Media	98
Music & Performing Arts	102
Public Services	108
Science	114
Sport	118
Tourism & Chef Skills	124
Visual Arts	130

Begin your own Runshaw Story!

B+

The average A Level grade this year;
and at least a B every year for over
10 years!

9 in 10

Advanced Vocational students
achieved High Grades, and 100%
Pass Rate.

43

Offers this year for Medicine,
Dentistry, Veterinary Science and
Oxbridge.

**UK
Top
20!**

One of the Telegraph's best colleges
in the country for getting a place at
Oxbridge!

**Number
1**

Most learners progress to
outstanding first choice destinations
(HE, degree apprenticeships and
high level employment).

Welcome to Runshaw



“We are extremely proud of our students. They are a delight to work with. I hope you will join us and I look forward to making you welcome at Runshaw.”

Clare Russell - Principal & CEO

Exceptional results:

Runshaw students consistently achieve the highest average grades in the North of England!

Excellent progression:

to high quality destinations, including Oxford and Cambridge Universities, Medicine, Dentistry and Veterinary Science courses, prestigious conservatoires and competitive degree apprenticeships.

Unrivalled enrichment

and Horizons programme – over 60 activities to choose from.

Individual programmes of study:

YOU control what you study, from an extensive range of courses.

At Runshaw, you will find:

- outstanding teaching, from inspirational teachers
- a diverse, inclusive and respectful college community
- exceptional support, advice and guidance from staff who care about each individual
- the right course for you, so that you can explore your interests and find your passion
- an exciting and extensive range of extra-curricular opportunities
- that students are safe, happy and successful

Visitors to the college frequently comment on its happy and purposeful atmosphere. We believe this comes from the friendly and respectful relationships which exist between staff and students, creating a college community where each person is valued and can flourish. We are proud of our reputation and popularity. The successes of our students over the years has led to widespread national recognition.

We want every student to benefit from an environment conducive to learning. Our impressive college campus is full of high-quality learning and social spaces, resourced with industry-standard equipment and technology.

We are very much looking forward to you joining our college community. In the meantime, if you have any questions about any aspect of college life, please ask to speak to a member of our college admissions team on 01772 643000 or email welcometorunshaw@runshaw.ac.uk

Every **individual** matters

As a student at Runshaw College, you are at the heart of everything we do. We believe in the power of education to change lives, so we prioritise inspirational teaching and learning, and provide you with all the support you need to achieve your goals and ambitions.

Above all, we want you to be happy here and to achieve your full personal and academic potential.

At Runshaw we provide:

Student Services & Wellbeing Hub for counselling, spirituality, health and wellbeing

Dedicated **Progress Mentors** for every student

Inspiring **Study** spaces

Work Placement unit

Make **lifelong friends**

Fantastic enrichment
opportunities, including
lunchtime karaoke,
quizzes, pool table,
table football

Educational
visits and
trips

Have **your** say to shape the college:

- Personal Tutor Representatives
- Focus Groups
- Student Council
- Student Governors

Beautiful, vibrant and safe
campus
Friendly social spaces

Getting **you** where **you** want to go...

At Runshaw, you will receive high quality careers guidance. Specialist staff will help you prepare for your chosen next step. Every Runshaw student also benefits from the unique '**Runshaw CV**' to take away and use when applying for opportunities.



Careers advisors

Dedicated **UCAS** team

Individual Runshaw **CV** for every student

Apprenticeship **opportunities**
in every area

Wide range of **courses** from
Entry Level to Level 6



Making **you** more employable

At Runshaw, you will gain the skills and experience you will need for successful employment in the future.

You will have the opportunity to develop these skills through:

- **Work experience and industry placements with one of our hundreds of Partner Employers**
- **Real work environments:**
 - Travel Hub
 - Runshaw Radio
 - Chef School
- **Volunteering: V50, V100 awards**
- **Student Ambassador work & charity fundraising**



At Runshaw, you will gain an advantage over other candidates applying for your choice of job role or higher education place. We offer additional qualifications relevant to a range of career aims so that you can find one that will really help you get ahead!

The Duke of Edinburgh's
Award

Prestigious Competitions

CREST awards, UK Maths Challenge, Informatics Olympiad and many more!

GCSE Maths & English

First **Aid**

Additional Learning **Support**

For students with additional assessed needs



Student Support Plan (SSP) - Personalised, relevant support strategies to inform teaching and learning

Assistive Technologist



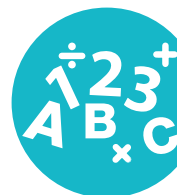
High Needs Coordinator – Liaise with Students, Parents/Guardians, High Schools and the Local Authority to ensure all support needs are met at Runshaw in line with Education Health and Care Plans (EHCP)

Specialist Support Coordinator - Social Skills workshops, Employability Skills, Independent Living Skills and Wellbeing sessions



Exam Access Arrangement

In and Out of class support from our team of Education Support Worker specialists



Specialist Tutors - Maths, English and Study Skills

Transition Support and **Activities**



Horizons Programme: Academies & More

As part of the Horizons Programme, there is an opportunity to join an Academy in every subject at Runshaw!

Each Academy provides students with an unrivalled range of additional opportunities to challenge and stretch themselves beyond the syllabus, and help you stand out from the crowd.

Add value with extra activities

- Prestigious Universities Programme
- Sport Academy
- Art and Music Academies
- Science Academy
- Medical Society
- Dance and Drama Academy
- Debating Society - 'Think Tank'
- Law Mock Trials & Mooting

For further details on opportunities please see our Horizons brochure.



(you CAN Do it!)

Oxford & Cambridge: Prestigious Universities Programme



Extra help to realise your dreams

The Sunday Times newspaper gave Runshaw its highest AA grading for the support given to applicants to Oxford and Cambridge.

Currently, over 1200 former students are studying at the prestigious Russell Group and 1994 Group of Universities.

One of the ways we support our student applications is through our **Prestigious Universities Programme**. The programme includes lectures on what is required for these universities, talks from visiting academics and former Runshaw students, workshops with Oxbridge Admission Officers, trips to University taster days and the Oxbridge Regional Conference, and the chance to visit Oxford and Cambridge.

The Oxbridge selection process is unique, so special assistance is provided using the expertise which Runshaw staff have built up through their relationships with colleagues at Oxford and Cambridge.

Runshaw is also the only state sector school or college to have produced **TWO** Presidents of the Cambridge Students' Union, Pav Akhtar and Laura Walsh. Both have visited the college to give guidance and information to prospective Oxbridge applicants. They are a real inspiration and show just what can be achieved by Runshaw students.

SUPPORTING
YOUR *journey*

Top College for Sport

All students are eligible to join the Sports Academy, and they do not have to enrol on a sports course to be a member. The ethos of the Academy is excellence in both academic study and sporting performance.

Runshaw has exceptional facilities: a fitness suite, a new state-of-the-art sport science lab, a grass pitch, two synthetic playing areas and a new sports teaching block.

The coaches hold first degrees or higher in sport disciplines alongside relevant NGB coaching qualifications.

In addition, a number of the coaches either play sport, or coach players, at county and national levels.

Specifically, as a member of the Sports Academy you will:

- expand your mental, physical, technical and tactical awareness
- develop your coordination and concentration skills
- raise your performance levels
- improve your effectiveness in your academic studies



Welcome

to A Levels



A Level 3D Design

Why should I come to Runshaw to study 3D Design?

Do you:

- have imagination and an interest in design?
- find researching past and present designers and artists interesting and inspiring?
- enjoy drawing and have the ability to develop ideas from a range of themes and topics?
- have an ability to visualise ideas on paper and in 3D?
- enjoy working and experimenting with 3D materials such as card, wood, metal, plastic, glass, clay and wire?

If so then 3D Design at Runshaw is the subject for you! You will develop creativity, independent thinking and the skills to express yourself within visual formats.

You will develop a portfolio of work which is invaluable when applying for design related courses at Higher education or apprenticeships. 3D Design complements all other subjects, as creativity, imagination and problem-solving skills are transferable to other A Level courses.

What will I study?

3D Design is a practical course, where you will learn 'by doing'; working in the 3D workshops to explore and create 3D work which covers a broad range of materials and techniques.

You will have the opportunity to work on a range of creative projects using the work of artists and designers and other sources to inspire your own ideas. You will explore complex issues and context within design, and how to develop your initial ideas to a resolved outcome.

Some of the specialist areas are:

- architecture
- sculpture
- interior products
- furniture design
- lighting design
- ceramics
- jewellery design

#Future

Architect

Artist

Jewellery Designer

Interior Designer

Set Designer

Spatial Designer

#YOU

**Specialist
3D workshop
Multi-disciplinary
Expert Teachers
and technician
support**

#ENTRY

**5x Grade 5s
including Art &
Design OR Graphic
Products / Resistant
Materials OR
portfolio of
work**

Please see our course leaflet
at www.runshaw.ac.uk
for more information.

For guidance about what careers
subjects can lead on to please access
nationalcareers.service.gov.uk

A Level Accounting

Why should I come to Runshaw to study Accounting?

Did you know that the average qualified Chartered Accountant working in the UK earns in excess of £75,000 a year? No wonder it's such a popular subject!

Our teachers are all highly qualified, experienced, and are examiners. Thanks to their help and support, Runshaw Accounting students in 2022 achieved 60% A*-B grades - our added value is outstanding!

As well as outstanding results, we have also successfully supported a number of students with their progression to world-class study. These include the PWC Flying Start Degree in Accounting & Finance at Manchester and Newcastle Universities and gaining places on prestigious school leaver programmes with industry leading firms, including KPMG, PWC, EY, Deloitte, RSM & BDO.

We regularly have speakers from industry and students also engage in events to help prepare them for life after college, including ICAEW interactive workshops and trips to firms such as KPMG and RSM.

What will I study?

To enjoy the subject and be successful you will need to be logical and confident working with numbers and able to analyse what these numbers show. You do not need any previous knowledge of the subject. The aim of the course is to give you an understanding of the concepts and principles that underpin accounting theory and practice and its importance in a variety of organisations. Within the course you will study aspects of both Financial and Management Accounting.

How is the course assessed?

In Year 1, the course is assessed internally via a formal assessment. In Year 2, there are two written examinations, which will comprise of a mixture of multiple choice questions, structured questions and extended answer questions.

#Future

Accountant

Management Consultant

Actuary

Tax Accountant

Investment Banker

Data Analyst

#YOU

Progress to sponsored degrees and training contracts

Amazing industry links

#ENTRY

5x Grade 5s, including English & Maths

Please see our course leaflet at www.runshaw.ac.uk for more information.
For guidance about what careers subjects can lead on to please access nationalcareers.service.gov.uk

A Level **Biology**

Why should I come to Runshaw to study Biology?

Our Biology department has excellent, well qualified, creative teachers utilising laboratories which are modern and well-equipped. We provide high quality, bespoke learning resources and use an extremely wide range of methods to develop our students' biological understanding.

There is also an outstanding array of enrichment on offer, such as Biology Olympiad, Science Society, Medical Society and A*/Oxbridge classes for those wanting to study a Biology related course at university.

Our Biology students progress to a variety of courses and careers as doctors, dentists and vets, whilst others move into science-based careers such as genetics, biochemistry, biotechnology and laboratory work.

What will I study?

Biology is a fascinating subject and involves the study of all the traditional areas of Biology, as well as an examination of technological advances in areas such as DNA technologies, fingerprinting, genetic engineering and gene therapy.

During the first year the fundamental ideas in Biology will be covered, including how the body defends itself against disease, cellular operations and the creation and roles of important biological molecules such as carbohydrates, proteins, lipids and DNA. As the course progresses, concepts to be covered will also include populations and environmental biology.

How is the course assessed?

The A Level course will be assessed by three examinations at the end of Year 2. There will be a separate assessment of students' practical skills throughout Year 1 and Year 2, and will result in students gaining a practical endorsement.

#Future

Biotechnologist

Dentist

Doctor

Geneticist

Research Scientist

Vet

#YOU

A*/Oxbridge
classes

Biology Olympiad
Medical Society

#ENTRY

5x Grade 5s
including Grade 6
in Maths and Grade
6 in Science OR
Biology

Please see our course leaflet
at www.runshaw.ac.uk
for more information.

For guidance about what careers
subjects can lead on to please access
nationalcareers.service.gov.uk

A Level Business

#Future

Human Resources

Marketing

Supply Chain & Logistics

Project Management

Finance Officer

Why should I come to Runshaw to study Business?

Business at Runshaw is a unique subject in that a lot of what you learn can be applied to many different subject areas, after all, whatever your future career – it will be in a business!

Our students always achieve well above national benchmarks and our teachers have a wealth of experience, with many having spent time in industry and have been, or are, external examiners with our exam board.

We also have a superb enrichment programme across college, and we strive to stretch and challenge our Business students by offering additional activities and events, where possible. This is to allow our students to refine their business skills through practical activities, workshops and guest speakers, making them better business leaders and attractive to employers. Our annual A-Level Business Futures Week event is well attended by both employers and higher education establishments. Our most recent event welcomed over 25 different guest speakers, covering nearly 40 timetabled slots across the week. Our guest speakers are enthusiastic in providing our students with a vision of what they could potentially do with their future after having completed A-Level Business.

What will I study?

In Year 1, students will study business in a variety of contexts; large and small businesses, UK focused, along with global businesses in both services and manufacturing. We will focus on the strategies that are needed for success in each of the key functional areas: Marketing, Operations, Human Resources and Finance, whilst also looking at how businesses are set up and managed.

The focus in Year 2 is on the study of strategic decision making at the highest levels of management, where you will consider: the impact of the external environment on strategic decision making, strategies for successful growth, the value of leadership and planning, successfully managing change, and why strategies sometimes fail.

How is the course assessed?

There are three written examinations at the end of Year 2 which cover the content of the business specification.

#YOU

**Fantastic
Industry Links
Futures Week
Student Success**

#ENTRY

**5x Grade 5s,
including English &
a written subject**

Please see our course leaflet
at www.runshaw.ac.uk
for more information.

For guidance about what careers
subjects can lead on to please access
nationalcareers.service.gov.uk

A Level Chemistry

#Future

Chemical Engineer

Dentist

Doctor

Forensic Scientist

Pharmacist

Vet

Why should I come to Runshaw to study Chemistry?

A Level Chemistry provides skills that are of use in many areas of employment, and is routinely required for progression onto numerous university courses.

Our students have consistently achieved A*-B grades above the national average for Chemistry. Our teachers are dynamic and highly committed to your success. We have large, modern, well-equipped laboratories and all students are provided with a supportive study environment.

Enrichment takes various forms in Chemistry. We have competitions, trips, and talks by visiting speakers. We have also developed strong links with many top universities, and throughout the course you will be given the opportunity to visit these universities to attend exciting lectures and practical sessions.

What will I study?

There are three main areas of study:

- Organic Chemistry: the study of the compounds of carbon. These compounds are used to make a vast range of useful products – plastics, fuels, pharmaceuticals, food and all living things
- Physical Chemistry: the 'hows and whys' of chemistry, the study of reactions as a whole and how they behave
- Inorganic Chemistry: the chemistry of all the elements in the periodic table, their reactions and the compounds that they form

How is the course assessed?

A Level Chemistry is a two year linear course. At the end of Year 2 you will sit three separate 2 hour exams of approximate equal weighting. The marks gained in these three exams are combined to give your overall grade in A Level Chemistry. There is also a practical component where students complete a list of required practicals whilst developing a range of different skills.

#YOU

Science Society

Regular competitions

Links to top universities

#ENTRY

5x Grade 5s
including Grade 6
in Maths and Grade
6 in Science OR
Chemistry

Please see our course leaflet at www.runshaw.ac.uk for more information.

For guidance about what careers subjects can lead on to please access nationalcareers.service.gov.uk

A Level Classical Civilisation

Why should I come to Runshaw to study Classical Civilisation?

Our classroom experience gives you the opportunity to become immersed in this fascinating period of history that has shaped the modern world. Lessons involve multi-media resources, artefacts and visits to Greece and Rome.

A Level Classical Civilisation has been designed to provide learners with a broad, coherent and rewarding study of the literature and culture of the classical world. It offers learners the opportunity to study elements of the literature, visual and material culture, and thought of the classical world, and acquire an understanding of their social, historical and cultural contexts.

What will I study?

The course will provide the opportunity to study both Greece and Rome and their surrounding worlds. You will develop an understanding, appreciation and knowledge of the Greeks and Romans through the buildings, art, poetry, plays and philosophy they have left us with.

Specifically, the first year of the course will involve study of Greek art, as well as a study, in some depth, of Homer's Odyssey, an epic poem which tells the story of a hero's journey back from the Trojan War.

The second year of the course studies the Roman Epic, Virgil's Aeneid, which will be compared and contrasted with the Odyssey, as well as an overview of Greek religion and philosophical attitudes towards the Gods.

#Future

Archivist

Barrister

Heritage Manager

Journalist

Museum Curator

#YOU

Active members of the Lytham St Annes Classical Association

Trips: British Museum (London), Greece, Rome and Naples

#ENTRY

5x Grade 5s, including English

Please see our course leaflet at www.runshaw.ac.uk for more information.

For guidance about what careers subjects can lead on to please access nationalcareers.service.gov.uk

A Level Computer Science

Why should I come to Runshaw to study Computer Science?

Despite the generous salaries offered, there is a shortage of qualified candidates for technology-based jobs, and our Computer Science course offers you the opportunity to gain the skills that employers and universities are seeking.

The course structure allows every student to build a strong foundation in programming whilst also providing an awareness of the management and organisation of computer systems.

The Python programming language taught at Runshaw will further develop the skill set developed by a number of our learners at GCSE, but also gives students new to programming the essential skills to progress to university and employment.

The Computing Academy will provide students with further opportunities to develop their skills in a range of other programming languages including Java and C#.

What will I study?

Students will learn about the characteristics of contemporary processors, input, output, and storage devices. Types of software and the different methodologies used to develop software, data exchange between different systems, data types, data structures, algorithms, and legal, moral, cultural, and ethical issues. Students will learn how to think abstractly, ahead, and procedurally and problem solve. Students will apply principles of computational thinking to an independent practical coding programming project.

How is the course assessed?

The course is assessed over 3 components:

Component 1: (40%) Computer systems

Component 2: (40%) Algorithms and programming

Component 3: (20%) Programming project

#Future

App Developer

Game Designer

CAD Technician

Security Analyst

Software Developer

System Analyst

#YOU

Learn Python,
Java & C#
Excellent
Employer Links
Computing
Academy

#ENTRY

5x Grade 5s,
including English

Please see our course leaflet
at www.runshaw.ac.uk
for more information.
For guidance about what careers
subjects can lead on to please access
nationalcareers.service.gov.uk

A Level Core Mathematics

Why should I come to Runshaw to study Core Mathematics?

Core Maths is a Level 3 qualification which holds UCAS points for University. This course is particularly suitable for those students who are studying the following A Level subjects; Psychology, Economics, Business Studies, Chemistry, Biology, Geography, Computer Science, and are not planning on doing A Level Maths alongside. The course provides support with the maths content in these subjects.

The course is also suitable for students who enjoy maths but are not doing an A Level in Mathematics.

What will I study?

The course has a problem solving approach with real world maths applications.

Some examples of what you will cover:

- analysis of data
- maths for personal finance
- statistics and probability
- critical analysis of given data and models (including spreadsheets and tabular data)

Some universities have even lowered entry requirements given a good Core Maths grade.

#Future

Archivist

Economist

Computer Scientist

Financial Analyst

Tax Inspector

#YOU

70% High Grades
Holds UCAS points

#ENTRY

5x Grade 5s,
including Maths

Please see our course leaflet at www.runshaw.ac.uk for more information.
For guidance about what careers subjects can lead on to please access nationalcareers.service.gov.uk

Level 3 Criminology

Why should I come to Runshaw to study Criminology?

L3 Applied Diploma in Criminology is a two year course, which you can study alongside A Levels. Teachers are specialists and use a variety of teaching methods to engage students in the study of crime, deviance and society's response to these.

We offer outstanding support to all our students to ensure that you enjoy learning, as well as continue developing multiple skills that will enable you to achieve your very best academic potential and progress further in education and/or work in the future.

In addition, there are a wide range of enrichment opportunities, including Horizons Academies, as well as a variety of guest lecturers from universities and the professional world, all designed to encourage your exploration and learning of topics other than those studied on the course.

What will I study?

During the first year you will study two units. Unit 1 looks at different types of crime and public perceptions of crime, gaining an understanding of why some crimes go unreported to the police and media. Unit 2 focuses on a series of criminological theories and will allow you to gain an understanding of why people commit crimes.

During the second year of the course, you will foster a deeper understanding of the criminal justice system and develop the skills needed to examine criminal cases and review verdicts. Unit 3 looks at the roles of personnel and processes involved from the moment a crime takes place until the verdict itself is passed. In Unit 4, you will apply your knowledge of criminological theories to understand how and why we use punishment within the criminal justice system, and evaluate the effectiveness of social control agencies, such as the police and prisons, in achieving their aims.

#Future

Psychologist

Detective

Police Officer

Prison Officer

Criminologist

#YOU

Amazing Academy

Experienced
specialist teachers

Focused exam
support

#ENTRY

5x Grade 5s, at least
one of which is a
Grade 5 in a written
subject

Please see our course leaflet
at www.runshaw.ac.uk
for more information.

For guidance about what careers
subjects can lead on to please access
nationalcareers.service.gov.uk

A Level Drama & Theatre Studies

Why should I come to Runshaw to study Drama and Theatre Studies?

At Runshaw we consistently achieve outstanding results in A Level Drama and Theatre, with 86% of students last year gaining A* - B grades. In addition to repeatedly attaining the highest grades, our students are provided with fantastic enrichment opportunities, studying within a department that performs a multitude of shows throughout the year. We also regularly visit professional theatres, allowing students to experience a diverse selection of live productions.

If you choose to study with us, you will be taught by two highly experienced practitioners of Theatre Studies, providing you with a dynamic learning experience. As well as excellent teaching, we have a wonderful purpose built drama studio and the Amanda Roocroft Theatre, which is equipped with state-of-the-art lighting and sound equipment.

The course is an exciting balance of practical and written assessments, introducing you to a range of theatre practitioners, forms and styles. The course also encourages a critical and sensitive response to the complexities of theatre, looking at the impact of different historical, social and cultural factors.

As well as giving you excellent knowledge of classical theorists, playwrights and practitioners that have changed the face of theatre, you will get the opportunity to respond to the texts from the perspective of an actor, director or designer.

What will I study?

The course is split over three components, 40% is a written exam and 60% is a combination of practical work and coursework

Component 1: Studying two set texts and a live review of a theatre maker (written exam)

Component 2: Creating a devised piece of theatre with an accompanying working notebook

Component 3: Practical exploration of three different play extracts with an accompanying reflective report

#Future

Actor

Choreographer

Director

Playwright

Producer

Set Designer

#YOU

A range of extra curricular productions, including an opportunity to perform at Edinburgh Fringe

#ENTRY
5x Grade 5s

Please see our course leaflet at www.runshaw.ac.uk for more information.
For guidance about what careers subjects can lead on to please access nationalcareers.service.gov.uk

A Level Economics

Why should I come to Runshaw to study Economics?

Economics offers a unique insight into how the world works and will help you to understand many of the big questions facing people today, such as:

- How are families and businesses affected by major shocks such as Brexit or the pandemic?
- What can we do about climate change?
- Would patients pay more tax for a better NHS?

Economics provides students with the skills to analyse issues to a high standard and provides an excellent foundation for Higher Education in such areas as economics, finance, business, management, accountancy, politics and philosophy. Recent students have progressed to degree courses at Oxford, Cambridge, the London School of Economics and Warwick University.

Our Economics students consistently achieve high grades above national benchmarks.

We also offer a variety of enrichment opportunities. We run an active Economics Academy that debates and explores current issues and we use our close links with top universities to organise study visits and talks from specialist economic researchers. Past topics have included the economics of football and the causes of the gender pay gap.

What will I study?

- how markets work and why they fail
- balance of payments and international trade
- developing countries and globalisation
- economic growth and recessions
- economics of the UK and Europe
- government economic policy
- inflation
- unemployment

If you plan to study Bachelor of Science (BSc) Economics at a top university they will ask for A Level Maths as well, although Bachelor of Arts (BA) Economics courses are also available that do not require Maths.

#Future

Economist

Financial Consultant

Market Analyst

Statistician

Journalist

#YOU

Progression to
Oxbridge, LSE,
Warwick

Enter national
competitions
Industry links

#ENTRY

5x Grade 5s,
including
English, and 6 or
above in Maths

Please see our course leaflet
at www.runshaw.ac.uk
for more information.

For guidance about what careers
subjects can lead on to please access
nationalcareers.service.gov.uk

A Level Engineering

Why should I come to Runshaw to study Engineering?

Our Engineering A Level is delivered by experienced, specialist teachers, in well-equipped design suites. Project Management is delivered as an integral part of the course and we have a wide variety of specialist provision that supports an excellent learning environment. There are always opportunities to gain support from experienced engineering teachers within your course too.

Enrichment activities in Engineering include visits to local universities and industrial sites relevant to the course. You will also have the opportunity to participate in competitions, such as the Crest awards for design, and we even schedule a visit to the Kennedy Space Centre each year! Engineering students also take part in our Architecture and Advanced Manufacturing Academies.

By studying Engineering at Runshaw there is real potential for progression onto a wide range of University degrees or careers, including Architecture and most engineering disciplines. You will also develop analytical, numerical and problem-solving skills that are valuable in a wide range of occupations and activities.

What will I study?

You will study topics which reflect modern developments and applications of Engineering. Apply your knowledge, understanding and skills of designing and manufacturing prototypes and products to given situations and problems whilst demonstrating your higher thinking skills to solve problems and evaluate the suitability of a design solution.

- computer aided design
- 3D prototyping
- electronics
- mechanics
- higher mathematical analysis
- material science
- project manufacturing and management

#Future

Automotive Engineer

Architect

Civil Engineer

Mechanical Design Engineer

Product Manager

#YOU

Architecture Academy

Fantastic facilities

Outstanding support

#ENTRY

Grade 6 Maths and 4x Grade 5s. Ideally students will also be studying A Level Maths and 3D Design

Please see our course leaflet at www.runshaw.ac.uk for more information.

For guidance about what careers subjects can lead on to please access nationalcareers.service.gov.uk

A Level English Language

Why should I come to Runshaw to study English Language?

Have a look at the questions below: if you answer 'yes' to all or most, then this is the subject for you.

Are you fascinated by language and grammar?

Are you curious about language and gender, technology and power?

Are you keen to discover how children learn language so quickly?

Do you ever wonder why - or if - accent and dialect matter?

English Language at A Level enables you to:

- develop skills of linguistic analysis and evaluation
- explore language usage in a wide variety of situations and social contexts
- respond to written, spoken and electronic texts
- study child language acquisition and language change

You will be taught by enthusiastic, dedicated and highly experienced tutors with extensive knowledge of setting and marking papers for national examining boards.

As a result, our English Language students achieve excellent examination results, with 100% pass rates and high grades rates well above national averages.

What will I study?

Something that is a world away from GCSE English!

Expect your linguistic journey to be both varied and challenging. You will explore the English language from all angles, delving inside to see how it works, and ranging outside to understand its multiple influences. Along the way it will become obvious why English is the main language for over one billion speakers – that's one in seven of the world's population. You will also learn why it has variously been described as a 'hoover', 'as slippery as cream buns' and a 'mirror of our society'.

#Future

Advertising Executive

Editor

Lawyer

Journalist

Publisher

Teacher

#YOU

Creative Writing Society
English Society and English Academy
Debating Society

#ENTRY

5x Grade 5s, including English Literature and Grade 6 in English Language

Please see our course leaflet at www.runshaw.ac.uk for more information.

For guidance about what careers subjects can lead on to please access nationalcareers.service.gov.uk

A Level English Language and Literature

#Future

Author

Journalist

Lawyer

Public Relations
Officer

Teacher

Why should I come to Runshaw to study English Language and Literature?

English Language and Literature is a stimulating and varied subject. It is an excellent choice for students who have enjoyed both areas of English at GCSE level and are just as interested in non-fiction and non-literary writing as they are in great plays and novels.

Our language and literature students achieve excellent examination results and have done so consistently for many years; with a 100% pass rate and a very high proportion of students achieving A*-B grades – the highest in the sector in 2019! Our lessons are exciting and we encourage students to explore independently the worlds of language and literature beyond the already rich and varied course.

In terms of enrichment, we run an annual Paris trip (in tandem with French) to complement our study of non-fiction writing about the city; organise theatre trips and university visits; and offer a weekly high grades group, creative writing support, and the opportunity to write for – or even run – the college magazine.

The department has a team of talented, well-qualified and committed staff who are passionate about their subject. Many are examiners, whilst others are published authors or hold higher degrees.

What will I study?

Over the two-year A Level course, you will study a novel, a biography, a play, a selection of poetry and an anthology of non-fiction texts. You will also complete a non-examined assessment (coursework) where you will have some choice in the texts you study.

#YOU

**Study Fiction
and Non-Fiction
High grades
group
Trips and visits**

#ENTRY

**5x Grade 5s, and
Grade 6 in English
Language and
English Literature**

Please see our course leaflet
at www.runshaw.ac.uk
for more information.

For guidance about what careers
subjects can lead on to please access
nationalcareers.service.gov.uk

A Level English Literature

Why should I come to Runshaw to study English Literature?

English Literature is an exciting, dynamic subject which gives students the opportunity to study the work of some of history's greatest novelists, poets and playwrights. Humans are the storytelling species: it's the most fundamental method we have for understanding the world – and you'll get to spend two years studying some of the best stories ever written.

Our English Literature students typically achieve excellent results at A Level, with pass rates consistently at 100% and high grades well above national averages. Our approach covers a variety of learning strategies, with particular focus on group discussion and collaboration.

As well as looking back into the past, our course also covers modern literature in the real world – we arrange theatre trips to see the plays we study, as well as having visiting speakers and poets to share and discuss their work. The department is staffed by dedicated teachers who love their subject – some have higher degrees and have published work of their own. We can also help you with your own Creative Writing if you are interested in making your own contributions to the literary canon!

What will I study?

You'll study a range of poetry, drama and prose writing to prepare you for your exam. For your coursework, you'll write an essay comparing two novels, one of which will be a 21st century text. You'll study the work of individual poets like William Blake in depth, as well as modern drama and a variety of diverse writers throughout the ages. And, of course, Shakespeare!

If you love to read and are curious about the world, if you enjoy analysing texts at GCSE, or if you simply want to broaden your cultural horizons, then we'd love to welcome you onto our course!

#Future

Author

Editor

Journalist

Lawyer

Publisher

Teacher

#YOU

Visiting speakers
and other extras

Enjoy novels,
poetry and plays

High grades
group

#ENTRY

5x Grade 5s including
Grade 6 in English
Language or English
Literature and a
Grade 5 in
the other

Please see our course leaflet
at www.runshaw.ac.uk
for more information.

For guidance about what careers
subjects can lead on to please access
nationalcareers.service.gov.uk

Extended Project Qualification

Why should I come to Runshaw to study the Extended Project Qualification?

Alongside your A Levels, the Extended Project Qualification will provide you with the skills which are sought after by universities and employers.

By studying the qualification you will gain confidence in working independently, reading about a subject which interests you outside of your A Level studies, and in presenting your findings to others.

As a result of these skills, many universities offer our EPQ students places with lower A Level grades if they also achieve their Extended Project Qualification, making it ideal for high achievers who want to secure places at top universities.

What will I study?

It is entirely up to you! You can choose any topic you like, but it must go beyond the demands of the specifications of your A Level subjects. You will be given a supervisor to help shape your topic and research, but the direction your project takes will be your decision to make.

How is the course assessed?

You will complete a piece of extended written work (approximately 5000 words), a production log and a presentation.

#Future

Doctor

Journalist

Lawyer

Public Relations
Officer

Teacher

Vet

#YOU

Enhance
your application
to university

Create a project
of your choosing
Expert research
skills

#ENTRY

5x Grade 5s,
including English

Please see our course leaflet
at www.runshaw.ac.uk
for more information.

For guidance about what careers
subjects can lead on to please access
nationalcareers.service.gov.uk

A Level Film Studies

Why should I come to Runshaw to study Film Studies?

A Level Film Studies at Runshaw offers an excellent opportunity to develop critical and analytical skills for dedicated film viewers who want to understand how film functions as an art form. The art of cinema is placed into its industrial context through a study of contemporary and historical modes of production, distribution and exhibition.

Your analytical skills will be nurtured through case studies, exploring critical perspectives and by an introduction to cinema from around the world. We use DVD and digital projection technology to enhance the close study of key sequences and frames, whilst we also use PC based edit facilities for the study of narrative and narration.

In addition to your lessons, you will have the opportunity to take part in lectures, masterclasses and trips with the Film and Media Academy, as well as enrichment activities through the Film Production Club and writing articles for 'Screen', the Film Studies Magazine.

What will I study?

The course aims to develop each student's knowledge and understanding of how a film works as a text through analysis and evaluation. Students will investigate how meanings and values can be read into a film and how film has developed as an art form historically.

Students will eventually develop a broad knowledge of film theory and spectatorship by viewing case studies of individual films.

#Future

Broadcast Presenter

Editor

Film Director

Locations Manager

Journalist

Teacher

#YOU

Film and Media Academy Skills Workshops in filming, editing & scripting

#ENTRY

5x Grade 5s, including English

Please see our course leaflet at www.runshaw.ac.uk for more information.

For guidance about what careers subjects can lead on to please access nationalcareers.service.gov.uk

A Level Fine Art

Why should I come to Runshaw to study Fine Art?

A Level Fine Art will see you working with a range of mixed media, predominantly exploring painting, drawing, textural and image-based collage, and print making. There is an initial diagnostic skill building start to the Fine Art course where you will work on similar topics before selecting your own personal theme and area of investigation for the coursework unit.

You will be taught in purpose-built studios with a dedicated print studio and access to an art study room when working outside of lesson time. Enrichment activities include trips to art exhibitions, museums, and university taster days. You will also have the opportunity to join our Art Academy.

On completion of the A level Fine Art course, our students often enrol onto a year-long Art Foundation portfolio building course at Runshaw. Some students choose to progress towards careers in illustration, animation, graphic design, interior design, architecture, theatre design, costume and media make-up, film, fashion, or surface pattern textile design. Some students progress to Classics or Art History at university, whilst others choose Psychology aiming to enter a career in Art Therapy.

Studying Fine Art can also be a contrast to revision-based subjects, building a wider range of transferable employability skills and allowing students to explore their passion and skill in the subject!

What will I study?

You will be taught a wide range of techniques, encompassing, in part, oil and acrylic painting, mono printing, etching, screen printing, large experimental drawing and large-scale paintings on canvas, wood and metal. You will work in sketchbooks, as well as on paper, boards, and canvas on a variety of scales. There is an option to present part of your development work in a digital format and some students choose to display final outcomes in a sculptural 3D or installation-based style.

As part of all practical projects, you will also complete:

- critical and visual analysis of visual sources, to inspire your own artwork
- drawing and recording: drawing from direct observation will be expected throughout the course

#Future

Architect

Art Director

Artist

Illustrator

Museum Gallery
Curator

Print Maker

#YOU

Art Academy

Creative studies

End of Year Show

#ENTRY

5x Grade 5s,
including Art
& Design OR
portfolio of
work

Please see our course leaflet
at www.runshaw.ac.uk
for more information.

For guidance about what careers
subjects can lead on to please access
nationalcareers.service.gov.uk

A Level Geography

Why should I come to Runshaw to study Geography?

Geography is an engaging, diverse and topical subject. We investigate contemporary geographical issues to promote global awareness, and work to develop a range of skills that are highly desired by employers.

Fieldwork is an essential part of Geography, and you will complete at least four days of fieldwork across the two-year course. You will visit places such as Liverpool, Manchester and the Fylde Coast to investigate regeneration and coastal environments. There is also the opportunity to take part in a residential trip abroad in the first year. Visiting speakers from universities and other organisations will provide opportunities for students who wish to take their studies beyond the A Level syllabus.

What will I study?

Geography is a skills-based course:

- Dynamic Landscapes investigates tectonic hazards and coastal change
- Dynamic Places examines globalisation, migration, and re-branding
- Physical Systems and Sustainability looks at issues of water and energy security
- Global Development looks at superpowers and geopolitical issues

Students are also able to complement their classroom learning by carrying out further research into topical case studies they are interested in.

#Future

Climate Scientist

Conservationist

Environmental Consultant

GIS Analyst

Project Manager

#YOU

Field trips, both locally & globally, including Iceland and Italy

#ENTRY

5x Grade 5s, including English and Grade 5 in Maths or Geography

Please see our course leaflet at www.runshaw.ac.uk for more information.

For guidance about what careers subjects can lead on to please access nationalcareers.service.gov.uk

A Level **Geology**

Why should I come to Runshaw to study Geology?

Geology at Runshaw College is an exciting and vibrant subject with appeal to Science-based and Physical Geography students. It is a diverse and interesting subject with a mixture of applied, practical and theoretical work, delving into the structure, evolution and dynamics of the Earth. We examine the vastness of geological time and the record of life on Earth, together with the impact Geology has on our own lives, from extracting mineral and energy resources, to protecting us from geohazards.

The course covers the breadth of the earth sciences, examining rocks and the geological processes that formed them, the workings of plate tectonics, and why geologists examine fossils. It also involves the application of these fundamental concepts to real-world industry sectors in which geologists have prominent roles, and applies them to big questions, such as the evolution of life on land and what causes climate change.

You will have the opportunity to experience textbook Geology in the field with day trips to important geological sites as part of the course.

Due to Geology's scientific nature, we advise that you take at least one other science subject, or maths, as part of your study programme.

What will I study?

You will study the following exciting topics over the course of the two years:

- plate tectonics, earthquakes and volcanoes
- rock processes and products
- environmental, economic and engineering geology
- the evolution of life, oceans and the atmosphere

#Future

Environmental Scientist

Geochemist

Geophysicist

Hydrogeologist

Oceanographer

#YOU

Workshops and guest lectures from industry professionals

Opportunities to take part in university workshops

#ENTRY

5x Grade 5s, including Grade 6 in Maths as well as Grade 6 in Science OR Geology

Please see our course leaflet at www.runshaw.ac.uk for more information.
For guidance about what careers subjects can lead on to please access nationalcareers.service.gov.uk

A Level Graphic Design

Why should I come to Runshaw to study Graphic Design?

This course encourages students to explore visual communication and ideas through typography, printmaking, illustration and digital media. Students are guided to work with a range of media including traditional art techniques such as drawing, printmaking and collage.

You will also learn specialist industry software including Photoshop, Illustrator and InDesign, using these programmes to explore image manipulation, vector graphics and layout design. The course gives you the opportunity to discover your own specialist area within graphics, from illustration to animation.

Our classrooms include specialist Apple Mac suites, a print room, dark room and photography studios.

It is important to note that this course is different to a GCSE Graphic Products course, since the Graphic Design course at Runshaw focuses students to create mainly 2D work, such as posters, CD covers, flyers and magazine articles. The Graphic Design year culminates in the end of year virtual exhibition which displays an amazing array of students' work produced over the whole of the course.

What will I study?

You will investigate the main areas of Graphic Design:

- advertising
- illustration
- packaging
- typography (design using type and letter forms)
- computers in art and design
- historical and contextual studies in Graphic Design

Within these areas you will produce personal responses to set briefs with expressive and experimental use of different media, techniques and processes.

Previous briefs have included advertising campaigns, book cover illustration and packaging design, all focusing on developing your own use of visual language.

#Future

Art Director

Artist

Graphic Designer

Illustrator

Content Creator

Marketing Manager

#YOU

Specialist Mac room with latest Apple iMacs and Adobe software

Industry experienced teachers

#ENTRY

5x Grade 5s, including Art & Design OR Graphic Products OR portfolio of work

Please see our course leaflet at www.runshaw.ac.uk for more information.

For guidance about what careers subjects can lead on to please access nationalcareers.service.gov.uk

A Level History

Why should I come to Runshaw to study History?

Studying History presents us with new and exciting worlds to explore - the people, the ideas and the events of times we are too young to have lived through. Studying and trying to understand the past is fascinating in its own right, but will also enrich and deepen your understanding of humanity more generally and offer you new insights into the events of the present. "We are not makers of History, we are made by History". Martin Luther King Jr.

At Runshaw you will be challenged and given the tools to excel as a historian. As you develop your knowledge and abilities you will be provided with a variety of academic and practical skills highly relevant to a wide range of future careers. Your teachers will provide you with expert knowledge, guidance, and support every step of the way.

What will I study?

You will be able to choose ONE of two History pathways and will complete a Historical Investigation.

Pathway 1 - Early Modern History

- The Origins of Modern Europe: Monarchy, Conflict and Religion in Tudor England, & France in the Seventeenth Century

- The Tudors 1485 - 1603: a broad sweep through the problems of this despotic royal family
- Louis XIV of France 1660 - 1715: examining to what extent Louis XIV created an absolute monarchy from his magnificent palace of Versailles

Pathway 2 - Modern History

Crisis, Conflict and Power: Social, Economic and Political Transformation in the era of the British Industrial Revolution and Weimar and Nazi Germany:

- Britain 1783 - 1885: a broad sweep of the industrial revolution, and the changing face of politics: Pitt, Peel and Disraeli, plus social reform
- Democracy & Nazism: Germany 1918 - 1945: an in-depth study of the rise of the Nazis under the Weimar Republic and the establishment of a totalitarian dictatorship

Historical Investigation (Coursework)

As part of your A Level History course you will complete an independently researched and written historical investigation.

#Future

Journalist

Business Manager

Lawyer

Publisher

Researcher

Teacher

#YOU

Trips to Germany, Poland, France and London

Links with Lancaster University

#ENTRY

5x Grade 5s, including English and History (if taken), otherwise another written subject

Please see our course leaflet at www.runshaw.ac.uk for more information.
For guidance about what careers subjects can lead on to please access nationalcareers.service.gov.uk

A Level Law

Why should I come to Runshaw to study Law?

Law is a fascinating, dynamic subject that underpins all areas of life. High profile criminal cases are in the headlines every day, and places on law courses continue to be highly prized and can often lead to a lucrative career.

At the heart of Law at Runshaw is the Law Academy, where students from all classes and years come together on a weekly basis to take part in a variety of additional activities to develop their practical legal skills and try their hand at extra-curricular legal skills and even undergraduate level work. Guest speakers are a regular event with frequent presentations to students this year from local and national firms of solicitors, local authorities and industry. Students are also able to apply to become mentors to partner high school pupils and work closely in preparing cases to present in front of real judges in the Bar National Mock Trial Competition. Advanced level lectures and the opportunity to work closely with a practising barrister in our specially adapted courtroom, also ensures that those requiring the highest grades can achieve them.

We enjoy our own unique court room and students benefit greatly from a vast array of enrichment activities which really make Law at Runshaw very special:

- residential trips to London including the Houses of Parliament and the Supreme Court
- a strong tradition of Mooting with the annual Runshaw Moot Competition
- a strong tradition of success in the Bar National Mock Trial Competition – we have been regional event winners seven times (most recently in 2023)
- masterclasses and a wide range of guest speakers from local and national firms of solicitors, local authorities, universities and industry.
- support with degree apprenticeships.

What will I study?

Year 1:

Introduction to Law - The Legal System. Criminal Law, Law Making and the Law of Tort

Year 2:

Contract Law and the Nature of Law

#Future

Accountant

Criminal Investigator

Lawyer

Journalist

Manager

Police Officer

#YOU
LNAT and Oxbridge
Support
Law Academy
Oxbridge
preparation
classes

#ENTRY
5x Grade 5s,
including English

Please see our course leaflet at www.runshaw.ac.uk for more information.
For guidance about what careers subjects can lead on to please access nationalcareers.service.gov.uk

A Level Maths

Why should I come to Runshaw to study Maths?

Knowledge of mathematics is fundamental to many career pathways and there is a national shortage of trained mathematicians. Mathematics complements studies in many areas such as the sciences, finance, economics, business, computer studies and engineering. Research has shown that a degree in mathematics can give graduates a highly increased earning capacity and provides career choices which are the envy of many other graduates.

In addition to supporting students through their time at Runshaw, our A-level staff and student services team provide fantastic support to students wishing to progress on to higher education. A number of students go on to read Mathematics at prestigious universities in the UK and abroad, and a growing number are successfully gaining places on degree apprenticeships in industries such as engineering and finance.

The provision for students at Runshaw is excellent. Our staff are enthusiastic, well qualified and several are experienced examiners.

What will I study?

Students will study Pure Maths, Statistics and Mechanics:

Pure Maths – This is essentially the Maths you will be familiar with from GCSE, particularly the study of algebra, graphs and trigonometry. These ideas are extended to form the ‘tool kit’ on which all Maths is based. Calculus, the mathematics of growth and change, on which so many applications depend, is introduced and developed.

Statistics – This is the mathematics of data or information processing and extends many ideas including averages, standard deviation and probability distributions.

Mechanics – This is the study of forces and the movement of objects and has many applications in the sciences, particularly physics and engineering.

If you are excited by the prospect of combining your studies with a number of challenges as well as great enrichment, then A Level Mathematics at Runshaw College is for you!

#Future

Accountant

Architect

Banker

Engineer

Programmer

Sports Scientist

#YOU

Weekly Maths Academy
University entrance exam preparation
Variety of trips & visits

#ENTRY

5x Grade 5s, including Grade 6 in maths on the higher paper

Please see our course leaflet at www.runshaw.ac.uk for more information.

For guidance about what careers subjects can lead on to please access nationalcareers.service.gov.uk

A Level Further Maths

Why should I come to Runshaw to study Further Maths?

Further Mathematics A Level is not just for those who want to go on and study Maths at University. Anyone who enjoys Maths and thinks they might wish to study a Maths related degree at University should seriously consider it.

The Further Mathematics programme produces exceptional results. Most recently 100% of our students achieved a high-grade in their Maths A Level and 91% achieved a high-grade in their Further Mathematics A Level.

To complement the class-taught mathematics, you will also have the opportunity to study additional material covering advanced mathematical concepts. This will further support and prepare you for your chosen degree course, as well as developing the skills of independent self-motivated study which are highly valued by universities.

Through our enrichment programme, you have the chance to take problem solving to the next level and will add elegant techniques to your mathematical skill-set, which will also be extremely useful for tackling entrance exams to prestigious universities such as Cambridge, Oxford and Warwick.

What will I study?

You will study a wide variety of different areas of mathematics, including Pure, Mechanics and Statistics. Throughout the first year you will study the core ideas utilised in A Level Mathematics coupled with elements of Applied Mathematics. This will equip you with the mathematical foundations required to approach the second year Further Mathematics course with confidence, where you will study Further Pure and Further Applied Mathematics. At the end of the two year course you will have achieved an A Level in Mathematics and an A Level in Further Mathematics.

#Future

Computer Scientist

Data Analyst

Economist

Engineer

Financial Analyst

Physicist

#YOU

Oxbridge Programme

UK Maths Trust competitions
Additional modules

#ENTRY

5x Grade 5s,
including Grade 8
in Maths

Please see our course leaflet
at www.runshaw.ac.uk
for more information.

For guidance about what careers
subjects can lead on to please access
nationalcareers.service.gov.uk

A Level Media Studies

Why should I come to Runshaw to study Media Studies?

Students choose Media Studies for a number of reasons: some may wish to follow a media-related career path at university, others may have a keen interest in one or more aspects of the modern media and have a curiosity as to how it works.

Our teaching teams are led by published writers and examiners who recently helped our students achieve a superb 100% pass rate, with 85% of the students achieving A*-B grades and 30% achieving A's. Runshaw students' practical work is also regularly judged as being amongst the best in the country.

In addition, fantastic enrichment activities will be available to you through visits and trips, as well as an opportunity to work with the British Youth Film Association on major projects.

You can also progress onto a wide range of related courses at university, such as practical media courses, and theoretical media courses. Equally, Media Studies is excellent preparation for courses in English, Cultural Studies, Film Studies, Marketing and Promotion, and other Humanities and Business-related courses.

What will I study?

The first year focuses on introducing you to the main issues impacting on contemporary media. You will look at the production of media products and how audiences access and engage with it. Media Studies looks at the relationships between the traditional media (film, television, newspapers etc) and e-media, and you will participate in the close study of a number of media products.

The second year allows you to investigate more advanced conceptual issues. This will allow you to understand the way the media is part of our culture and the political and social impact it has. You will also work on creating your own media products.

#Future

Camera Operator

Digital Marketer

Film/TV Director

Journalist

Radio Broadcaster

Sound Engineer

#YOU

Outstanding individual support for students

Travel opportunities

#ENTRY

5x Grade 5s, including English

Please see our course leaflet at www.runshaw.ac.uk for more information.

For guidance about what careers subjects can lead on to please access nationalcareers.service.gov.uk

A Level Modern Foreign Languages

Why should I come to Runshaw to study Modern Foreign Languages?

Runshaw's MFL team of highly experienced A Level teachers are committed to helping you achieve your very best in these challenging but rewarding subjects.

Studying a language at A Level requires a high level of commitment but the rewards are immense. In addition to the sheer pleasure of learning a new language, you will also develop the communication, critical thinking and research skills to equip you for a diverse range of exciting futures.

Much class time will be spent working in your chosen language, developing your knowledge and proficiency by mastering its grammar and exploring its culture and society. You will receive weekly coaching to develop your speaking skills and prepare you for the oral exam, and will have access to a multitude of up-to-date, relevant and interactive language learning resources.

What will I study?

The A Level course builds on the knowledge, understanding and skills gained at GCSE. You will:

- study advanced level grammar and language structures
- explore the society, culture and history of your chosen language country
- further develop your fluency and cultural knowledge by studying one literary text and one film
- complete an independent research project in your chosen language

How is the course assessed?

You are assessed in two exams at the end of Year 2. In addition to listening and reading comprehensions, you will translate and summarise unseen texts, and write one essay in your chosen language on the literary text, and one on the film. Your speaking ability is assessed in a 20-minute unscripted speaking test.

#Future

Business Manager

Civil Servant

Intelligence Officer

Interpreter

Lawyer

Publisher

#YOU

**Cultural discovery
Outstanding
individual support
Extra speaking
classes**

#ENTRY

**5x Grade 5s,
including English
Language and Grade
6 in your chosen
language**

Please see our course leaflet
at www.runshaw.ac.uk
for more information.

For guidance about what careers
subjects can lead on to please access
nationalcareers.service.gov.uk

A Level Music

Why should I come to Runshaw to study Music?

As a Music student at Runshaw you will enjoy our superb music facilities, which include a specialist studio with digital piano, grand piano and four spacious, well-equipped practice rooms.

Our teachers are highly qualified experienced examiners, many of whom are graduates of leading UK Conservatoires of Music and are also professional musicians who perform extensively. As a result, our grades are excellent, with consistent 100% pass rates and excellent added value.

As a Music student you will become a member of the Runshaw Music Academy, giving you the chance to take part in trips, guest lectures and allowing you many performing opportunities, involving instrumental bands and ensembles, choirs, rock music workshop, and concert tours.

Our students in recent years have progressed to:

- Birmingham Conservatoire
- The Royal Northern College of Music
- Royal Welsh College of Music and Drama
- Durham University
- Leeds College of Music
- Liverpool Institute of Performing Arts (LIPA)

In 2023, the Music department created a partnership with Leeds Conservatoire and consequently, all of our students are guaranteed an audition, should they apply.

What will I study?

A Level Music covers the three areas of composing, performing and listening.

You will:

- listen to and analyse classical and jazz music
- perform solo pieces on your main instrument
- compose in a range of genres within the Western Classical and Jazz traditions.

How is the course assessed?

- Performance: 10-12 minute recital as a soloist, recorded in your second year
- Composition: one written to a brief and one free composition
- Listening & Analysis: a written exam covering aural skills, analysis and the historical context relating to Classical and Romantic music as well as Jazz and Popular Song

#Future

Solo & Ensemble Performance

Composition

Orchestration

Music Therapist

Event Management

#YOU

Runshaw Music Academy

Free 1:1 Instrumental Tuition

Specialist Workshops & Masterclasses

#ENTRY

Successful Audition & Interview
5x GCSE Grade 5 or above including GCSE in Music (or equivalent qualification) or ABRSM Grade 5 Theory

Please see our course leaflet at www.runshaw.ac.uk for more information.
 For guidance about what careers subjects can lead on to please access nationalcareers.service.gov.uk

A Level Music Technology

Why should I come to Runshaw to study Music Technology?

This is a practical course designed for creative musicians with interests in creating high quality audio recordings.

We have a range of industry standard facilities, including a fully equipped Mac Suite with state-of-the-art Pro Tools software, and a recording studio with two live rooms, a large control room, and a Pro Tools HD system.

The music department facilities also include a suite of six practice rooms and all students can book our facilities outside of lesson times.

We also organise a range of extra-curricular music activities through our Music Academy, including instrumental bands and ensembles, Jazz and Popular Music workshops, and concert tours.

What will I study?

You will study:

- multi-track recording in the studio
- music production using a Digital Audio Workstation
- sound design
- music technology in performance
- special subject investigation

How is the course assessed?

The course is a single vocational option within the A Level Programme and is equivalent on completion of Year 2 to a complete A Level via a selection of practical projects, so there is no final exam. All units are formally assessed throughout the course.

#Future

Audio Engineer

Musician

Producer

Software Developer

Studio Manager

Teacher

#YOU

Industry standards

Development of music production

Outstanding resources

#ENTRY

A minimum of 5x Grade 5s including GCSE Music OR Grade 3 in ABRSM Music Theory

Please see our course leaflet at www.runshaw.ac.uk for more information.

For guidance about what careers subjects can lead on to please access nationalcareers.service.gov.uk

A Level **Philosophy**

Why should I come to Runshaw to study Philosophy?

As a Philosophy student you will join a long and distinguished tradition of attempting to understand the world around us and our place within it. The word Philosophy is from the ancient Greek, meaning 'the love of wisdom'. Philosophers attempt to gain 'wisdom' or 'understanding' by asking the most fundamental questions and attempting to answer them through the use of conceptual analysis, empirical evidence and rational argument.

In studying Philosophy, you will become a more disciplined and logical thinker, and will develop an ability to both deconstruct and construct concise logical arguments.

As 20th Century British philosopher Bertrand Russell put it, "Through the greatness of the universe which philosophy contemplates, the mind is also rendered great." If you are not afraid of intellectually challenging ideas and new perspectives, then Philosophy could be the subject for you.

It is possible to study Philosophy as a single subject at University, or study it in a wide range of combinations with other subjects such as Politics, Economics, Mathematics, Social Sciences and Natural Sciences. Philosophy will provide you with a range of skills that are valued by employers and you will find Philosophy graduates in a hugely varied range of jobs.

What will I study?

Questions such as:

- Is our perception of the world reliable?
- Does the existence of the universe require an explanation?
- What is the mind, and can we explain consciousness?
- How should we make decisions about what is morally right and wrong?

#Future

Advertising Executive

Barrister

Business Manager

Journalist

Lawyer

Teacher

#YOU

**Exciting enrichment
Fantastic support
Tutors are subject
specialists and
experienced
examiners**

#ENTRY

**5x Grade 5s,
including English**

Please see our course leaflet at www.runshaw.ac.uk for more information.
For guidance about what careers subjects can lead on to please access nationalcareers.service.gov.uk

A Level Photography

Why should I come to Runshaw to study Photography?

A Level Photography offers you the opportunity to learn a wide range of photographic techniques and processes. The course allows students to extend their knowledge of both the technical and theory side, and encourages students to explore new ways of seeing the world.

In Year 1 you will have the opportunity to develop photographic skills ranging from traditional darkroom to experimental image making, studio and location shoots and digital techniques, using software such as Adobe Photoshop. Throughout the whole of the course, you will create an online portfolio of imagery, alongside an Instagram blog to showcase the wide range of skills developed and quality of work you have produced, to aid and enhance both your employability skills and your progression to further degree level study.

Runshaw has a dedicated photography studio with a great range of lighting and props, and a fully equipped black and white darkroom. You will be taught in specialist, purpose built studios and workshops, by teachers who have worked in the industry in a variety of different fields, supported by a subject specialist technician.

Photography students have the opportunity to:

- go on study visits to galleries and photography shoot locations
- undertake real-life briefs
- create a portfolio of work

The Photography year culminates in the end of year public exhibition which displays an amazing array of students' work produced over the whole of the course, and is something that all our staff and students look forward to.

What will I study?

You will investigate:

- black and white analogue and darkroom photography
- digital camera work and computer editing photography
- location photography
- studio incorporating experimental lighting photography

#Future

Camera Operator

Fashion Journalist

Graphic Designer

Media Executive

Photo Editor

Photographer

#YOU

Portfolio for progression

**Digital/
experimental skills**

Specialist facilities

#ENTRY

**5x Grade 5s,
including Art
& Design /
Photography OR
portfolio of work**

Please see our course leaflet at www.runshaw.ac.uk for more information.

For guidance about what careers subjects can lead on to please access nationalcareers.service.gov.uk

A Level Physical Education

Why should I come to Runshaw to study Physical Education?

As a Physical Education student at Runshaw, you can be assured of the very best teaching, all supported by our interactive environment, where class notes, revision notes, quizzes and guidance notes are available for students to access from both inside and outside of college.

You will have the chance to take the theory of your lessons and put it into practice by visiting universities where you will undertake Exercise Physiology laboratory testing and practical workshops on training types and sports analysis.

After finishing your course you can progress to university to study a variety of courses, including Sports Science, Sports Studies, Leisure Management, Teaching, Sports Therapy, Physiotherapy and others.

For those wishing to study Physiotherapy at university, subject combinations should be considered carefully and further advice sought.

What will I study?

Section A: Applied anatomy and physiology and exercise physiology, including the cardiovascular system, respiratory system, musculoskeletal system and biomechanics.

Section B: Skill acquisition and sports psychology, including classifications of skills, anxiety, theories of learning and motivation.

Section C: Sport and society and technology in sport, including the history of sport, barriers to participation, commercialisation and video analysis programmes.

#Future

PE Teacher

Physiotherapist

Sports Coach

Sports Journalist

Sports Therapist

Sports Nutritionist

#YOU

Sports Academy
Exam support
tutorials
Excellent
facilities

#ENTRY

5x Grade 5s,
including PE
(if taken) and
Science OR
Biology

Please see our course leaflet
at www.runshaw.ac.uk
for more information.

For guidance about what careers
subjects can lead on to please access
nationalcareers.service.gov.uk

A Level Physics

Why should I come to Runshaw to study Physics?

Our Physics A Level is delivered by experienced, specialist teachers, in well-equipped laboratories. Practical work is delivered as an integral part of the course. Plenty of study materials are provided, and there are always opportunities for support with your work.

Enrichment activities in Physics include visits to local universities, CERN and other places of interest such as Jodrell Bank which are relevant to the course. Students will also have the opportunity to participate in competitions such as the Physics Olympiad and the International Astronomy and Astrophysics Competition. Several of our Physics students have also taken part in master classes in Cosmology, Particle Physics and Engineering at Lancaster University.

What will I study?

You will study topics which reflect modern developments in, and applications of, Physics:

- electricity
- mechanics
- particles and quantum phenomena
- radioactivity and nuclear energy
- waves and fields
- astrophysics

#Future

Astrophysicist

Engineer

Medical Physicist

Meteorologist

Research Scientist

Teacher

#YOU

**Physics Olympiad
Prestigious
Universities class
Electronics and
Science clubs**

#ENTRY

**5x Grade 5s
including Grade 6
in Maths and Grade
6 in Science OR
Physics**

Please see our course leaflet
at www.runshaw.ac.uk
for more information.

For guidance about what careers
subjects can lead on to please access
nationalcareers.service.gov.uk

A Level Politics

Why should I come to Runshaw to study Politics?

Politics is a great choice if you enjoy current affairs, debates and discussions, and wish to study a subject that is vibrant and exciting.

We regularly host visits from MPs and councillors, and students have the opportunity to experience a field visit to Parliament.

Through our Politics Academy, students have assisted in the running of mock elections at a local high school, and have also taken part in a residential trip to London, visiting Parliament and the Supreme Court, and engaging Speaker and Chorley MP, Sir Lindsay Hoyle, in a Q&A session in the historic committee rooms.

Our 100% pass rate shows that students enjoy and achieve when studying Politics at Runshaw College.

What will I study?

As most students will not have studied politics previously, prior knowledge will not be an assumption and staff will encourage the acquisition of skills in the first few weeks of the course. To help this, students will keep a political diary through their research into current affairs and developments.

The course itself particularly concentrates on the changeable values of British politics, including:

- electoral systems and voting behaviour
- issues in British politics today
- parties and pressure groups
- the politics of the USA
- ideologies

#Future

Lawyer

Journalist

HR Manager

Politician

Social Researcher

Teacher

#YOU

Political Diary

Visiting MPs

Mock Elections

#ENTRY

5x Grade 5s,
including a written
subject

Please see our course leaflet at www.runshaw.ac.uk for more information.
For guidance about what careers subjects can lead on to please access nationalcareers.service.gov.uk

A Level Psychology

Why should I come to Runshaw to study Psychology?

As a Psychology student at Runshaw you will benefit from highly qualified staff who are committed to helping you succeed using a range of creative and diverse teaching methods. As many of our teachers are specialist A Level examiners, our results are always excellent, recently achieving 66% A*-B grades.

Additionally, our Psychology Academy offers a number of short courses for you to undertake a variety of projects, all of which are designed to encourage exploration of topics other than those studied on the course, and further develop knowledge and skills to support your university application and chosen career progression.

When they leave us at the end of their course many of our students continue to study Psychology or related subjects, such as Criminology. Many students also become Psychologists in any of the specialist areas, such as occupational, child, clinical, criminal, sport or educational psychology, or go on to work in related fields such as social services, probation service, the police, the legal system, medicine, business, advertising and teaching.

What will I study?

The course will introduce you to the theories and methods in psychology and offer you the opportunity to look at some of the explanations psychologists use to understand human behaviour and experiences.

Year 1: You will study the ways in which psychologists approach the investigation of human behaviour, such as social approach, cognitive approach, biological approach and learning theories.

Year 2: You will focus on the application of psychology to different areas of everyday life, such as clinical and criminological psychology. This will be assessed by three external examinations which cover the material from both Year 1 and Year 2 at the end of the year.

#Future

Criminologist

Educational Psychologist

Detective

Doctor

Sports Psychologist

Teacher

#YOU
Psychology
Academy
Experienced
Specialist
Teachers

#ENTRY
5x Grade 5s,
including a written
subject and Maths or
Science

Please see our course leaflet
at www.runshaw.ac.uk
for more information.

For guidance about what careers
subjects can lead on to please access
nationalcareers.service.gov.uk

A Level Religious Studies

Why should I come to Runshaw to study Religious Studies?

Religious Studies appeals to students who like to debate key philosophical issues and get to the heart of why people hold religious beliefs. They are interested in the world in which they live, in current affairs and how religion has been, to some extent, marginalised by modern developments, such as the developments of science. You do not have to have any religious commitment to study this course and can be from any religious background, the key quality for this course is to have a lively and enquiring mind!

At Runshaw we have an outstanding record of success in Religious Studies, with a 100% pass rate for the past seven years and 68% A*-B grades last year. You can also join the Religious Studies Academy to extend your studies, taking part in trips, debates and guest lectures to allow you to fully appreciate how the world can be interpreted and understood.

Many of our students progress to read a wide number of degrees at University as Religious Studies has transferable skills that will make you a very strong candidate when the time comes to leave us.

#Future

Journalist

Broadcaster

HR Manager

Lawyer

Social Worker

Teacher

#YOU

Religious Studies Academy

Outstanding student satisfaction

Annual trips & guest speakers

#ENTRY

5x Grade 5s, including a written subject

Please see our course leaflet at www.runshaw.ac.uk for more information.

For guidance about what careers subjects can lead on to please access nationalcareers.service.gov.uk

A Level Sociology

Why should I come to Runshaw to study Sociology?

Sociology is the study of people in society, but depending on how we define society will determine how we study it. Sociologists are interested in finding out about a variety of social phenomena, including: family, education systems, different cultures, religious beliefs, crime and deviance.

The pass rate for Sociology is consistently 100%, and recently, 70% of students achieved A*- B grades. Our teachers' specialism, enthusiasm and commitment means that our students enjoy and achieve whilst studying Sociology at Runshaw College.

You will also have the opportunity to join the Sociology Academy, where you can debate and research topics other than those discussed in the classroom, such as, why are we seeing the rise of the Far Right in recent years? Is advanced technology and media creating an alternative reality for us to live in? How big is the divide between rich and poor in today's society?

We also attend many trips, visits and conferences, recent ones include:

- trip to a Buddhist temple
- trip to London (residential)
- guest speaker from Wigan Council discussing domestic violence
- trips to Lancaster and Edge Hill Universities

What will I study?

You will be given opportunities to discuss and debate a whole range of topical sociological issues.

A few examples of topics studied are:

- Why do some people join gangs?
- Why are more people getting divorced?
- Why do working class students underachieve in school?
- Why do some people join cults?

#Future

Social Scientist

HR Manager

Intelligence Analyst

Journalist

Police Officer

Social Worker

#YOU

Sociology Academy
Trips & Guest
Lectures
Amazing support

#ENTRY

5x Grade 5s,
including a written
subject

Please see our course leaflet
at www.runshaw.ac.uk
for more information.

For guidance about what careers
subjects can lead on to please access
nationalcareers.service.gov.uk

A Level Textiles

Why should I come to Runshaw to study Textiles?

Studying Textiles will allow you to explore the nature and purpose of all textile processes, and discover how initial ideas develop into finished products. You will work on themes that explore texture, colour, pattern, line and form, through experimentation with materials. You will also have the opportunity to explore areas of fashion including design, illustration and creative embellishment.

You will work in our purpose-built studios where all aspects of textiles and fashion are highly encouraged. This is enhanced by visits from practicing textile designers, who run workshops in order to introduce our students to new and exciting textile techniques and skills, exploring other artists' work, which will be used in coursework to inspire ideas.

For the last five years Textiles students have gained 100% pass rates, a positive testament to our excellent level of teaching and learning.

The Textiles year culminates in the end of year public exhibition which displays an amazing array of students' work produced over the whole of the course, and is something that all our staff and students look forward to.

After completing the course you will be able to progress to university to an Art-related degree course or a pre-degree Foundation Diploma in Art and Design.

What will I study?

Some of the subjects you will study are:

- appliqué and reverse appliqué
- garment design
- fashion design and illustration
- creating and developing surface pattern ideas
- creative machine and hand-stitch embroidery
- felt-making and manipulation
- 3D fabric manipulation

#Future

Artist

Fashion Designer

Interior Designer

Pattern Designer

Retail Buyer

Teacher

#YOU

**End of Year Show
Excellent Facilities
Personalised Learning**

#ENTRY

**5x Grade 5s,
including Art &
Design / Textiles
Technology OR
portfolio of
work**

Please see our course leaflet at www.runshaw.ac.uk for more information.

For guidance about what careers subjects can lead on to please access nationalcareers.service.gov.uk

Welcome to Apprenticeships



Your Apprenticeship options

An Apprenticeship at Runshaw is a fantastic pathway into a **variety of industries**. It combines a real job with taught training. Our Apprenticeships are exciting and wide-ranging as we want you to leave **multi-skilled** and aware of all the opportunities that exist within industry. So whether it is Business, Marketing, Childcare or Accountancy, our Apprenticeships will take you **where you want to go!**

Accounting

**Business
Administration**

**Customer
Service**

**Digital
Marketing**

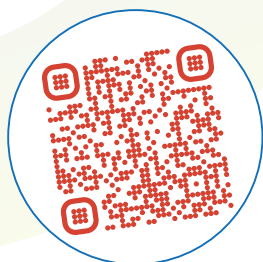
Early Years

**Human
Resources**

**Leadership
&
Management**

**Teaching
Assistant**

**Team
Leading**



Scan here to find out more about
our apprenticeship programmes
and apprenticeship vacancies!



Welcome

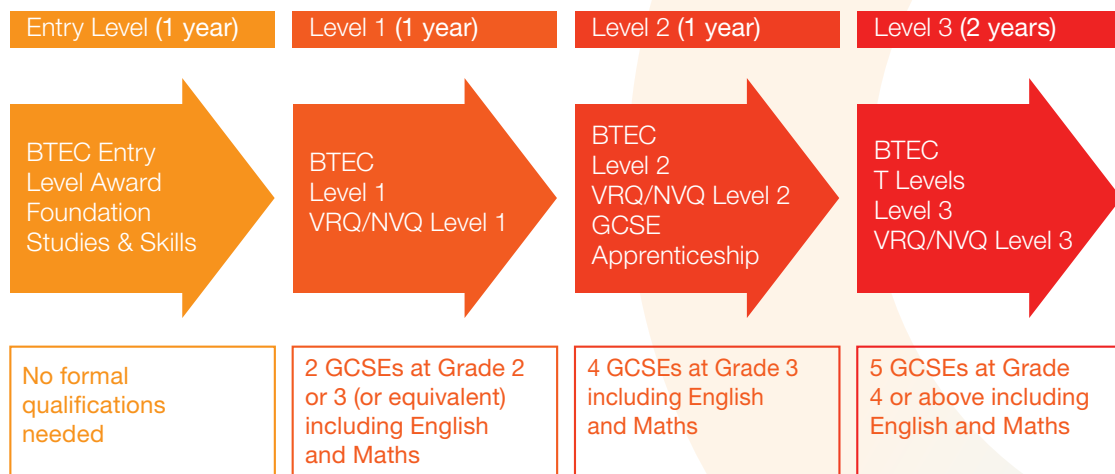
to Vocational
& T Levels

What are **Vocational & T Level** Courses?

Our Vocational and T Level courses are linked to the world of work. You choose one area and one level, studying it in detail. You will be assessed in many different ways - **exam, portfolio, or practical assessment**, so English and Maths are key components of your programme.

What progression is there?

As our vocational courses are strongly linked to the workplace, you will be in a strong position to either go straight into **employment**, secure an **apprenticeship**, or gain a place at a **prestigious University**.



T-LEVELS

THE NEXT LEVEL QUALIFICATION

To find out more and apply for our courses please see our course leaflets on the Runshaw website www.runshaw.ac.uk and press the '**Apply**' button to start your application.

Business

Business BTEC Level 2 **60**

Business BTEC Level 3 **61**

Business Management & Administration T Level **62**

T-LEVELS
THE NEXT LEVEL QUALIFICATION

A Vocational Business course at Runshaw is a fantastic pathway into the varied world of business and industry. Whether it is furthering your knowledge at university or going straight into employment, our Business courses will take you where you want to go!

Our Level 2 and 3 courses are exciting and wide-ranging as we want you to leave multi-skilled and aware of all the opportunities that exist within the industry. You will experience superb teaching and numerous enrichment opportunities. You will be involved in producing reports and other business documents, presentations and advertising materials, as well as various role-plays to develop key employability skills, such as interview technique, customer service, and pitching business proposals.

Please see our course leaflets at www.runshaw.ac.uk and press the **'Apply' button**. For guidance about what careers subjects can lead on to please access nationalcareers.service.gov.uk



BTEC Level 2 Business

What will I learn?

You will learn about the important elements of enterprise in the world of business. This will range from understanding marketing and finance, to focusing on areas that include retail and customer service environments. You will also look at the ownership and structures of different businesses and decide on the best option for you when planning your own business start-up. As part of your study programme you will also study Maths and/or English.

How will I be assessed?

Coursework is set continually throughout the year so you will know how you are progressing at all times. There are also two external examinations.

What enrichment can I look forward to?

You will have access to guest speaker presentations, business related trips, work experience, and take part in team building activities.

What progression is there?

Successful completion of the course can lead to progression on to a Level 3 course at Runshaw such as Level 3 Business, T-Level, an Apprenticeship, or employment.

#Future

Marketing Executive

Sales Executive

Retail Manager

HR Assistant/Manager

Finance Assistant

Customer Service Professional

#YOU

100% Pass Rate

Fun trips to local businesses

Highly experienced business people

#ENTRY

4x Grade 3s, please note you will also resit your Maths & English if they are not a 4 or above

Please see our course leaflet at www.runshaw.ac.uk for more information.

For guidance about what careers subjects can lead on to please access nationalcareers.service.gov.uk

BTEC Level 3 Business

What will I learn?

You will develop a real understanding of what is involved, both theoretically and practically, in becoming an effective business professional.

Year 1: you will cover business functions and internal and external influences on businesses, including marketing, management of business resources, personal and business finance, leadership and teamwork, communication and business ethics, through a variety of mandatory and optional units.

Year 2: you will cover the learning of specialised subject areas such as branding, digital marketing, international business, human resource management, retail and distribution, and the English legal system.

How will I be assessed?

Your assessment will vary greatly and reflect the types of communications used daily in business such as reports, presentations, debates, podcasts, meetings, and will also include practical involvement in activities such as market research and the managing of a business team event activity.

New from 2020 were examinations in the personal and business finance unit, and developing a marketing campaign in year 1, with principles of management and business decision making examinations being sat in year 2 – and all other units being internally assessed coursework.

What enrichment can I look forward to?

You will have the opportunity to be involved in external visits and guest speaker presentations. Recent visits have included Alton Towers, British Aerospace, Liverpool One, Paris, Belgium, Italy, Moscow, New York, Shanghai and Beijing.

What progression is there?

You will have a mass of future opportunities available to you. You could choose to go on to university to study a wide variety of related topics such as Law, Project Management or Accounting. Alternatively you could enter the world of work and specialise in Marketing, Finance, Sales or Personnel sectors.

#Future

Accountant

Advertising Executive

Banker

Public Relations
Advisor

Retail Manager

Sales Advisor

#YOU

Superb results
Excellent
progression

Engaging
Horizons business
enrichment
activities

#ENTRY

5x Grade 4s,
including English
& Maths

Please see our course leaflet
at www.runshaw.ac.uk
for more information.

For guidance about what careers
subjects can lead on to please access
nationalcareers.service.gov.uk

Business Management & Administration T Level

What will I learn?

A T-Level in Business is ideally suited to those who are looking for a career that will ultimately lead to a leadership or management role. T-levels offer a modern alternative to A Levels as they incorporate high quality classroom study with practical industry related skills.

Year 1: You will complete the Management and Administration Core and will cover essential topics including:

- Business context
- People
- Quality and Compliance
- Finance
- Policies and Procedures
- Project and change management
- Business behaviours

Year 2: You will complete an Occupational Specialism in Team Leadership and Management. This means that your knowledge, skills and behaviours will be of a standard for you to enter the occupation or industry, or go on to further study.

As part of the T-Level you will also complete a substantial work placement (minimum 45 days) to further develop your skills in a working environment.

How will I be assessed?

Year 1: You will complete two external written exams from the Management and Administration Core component alongside an externally assessed 25 hour computer based project.

Year 2: You will complete your occupational specialism and an industry placement.

What enrichment can I look forward to?

You can look forward to an exciting range of enrichment that supports your learning, including industry expert guest speakers, and local, national, and international trips!

What progression is there?

T Levels will provide you with opportunities to progress to university, Apprenticeships or full time employment in related specialist areas.

#Future

HR Manager

Project Manager

Consultant

Logistics Manager

Small Business Owner

Education

#YOU

Industry placements

Practical learning

Classroom theory

Team Building trips

#ENTRY

5x Grade 4's including English and Maths

T-LEVELS
THE NEXT LEVEL QUALIFICATION

Please see our course leaflet at www.runshaw.ac.uk for more information.

For guidance about what careers subjects can lead on to please access nationalcareers.service.gov.uk



Computing and Digital

IT with Business BTEC Level 1 **66**

T Level Transition Level 2 **67**

ESports Level 2 **68**

ESports Level 3 **69**

RQF Level 3 IT **70**

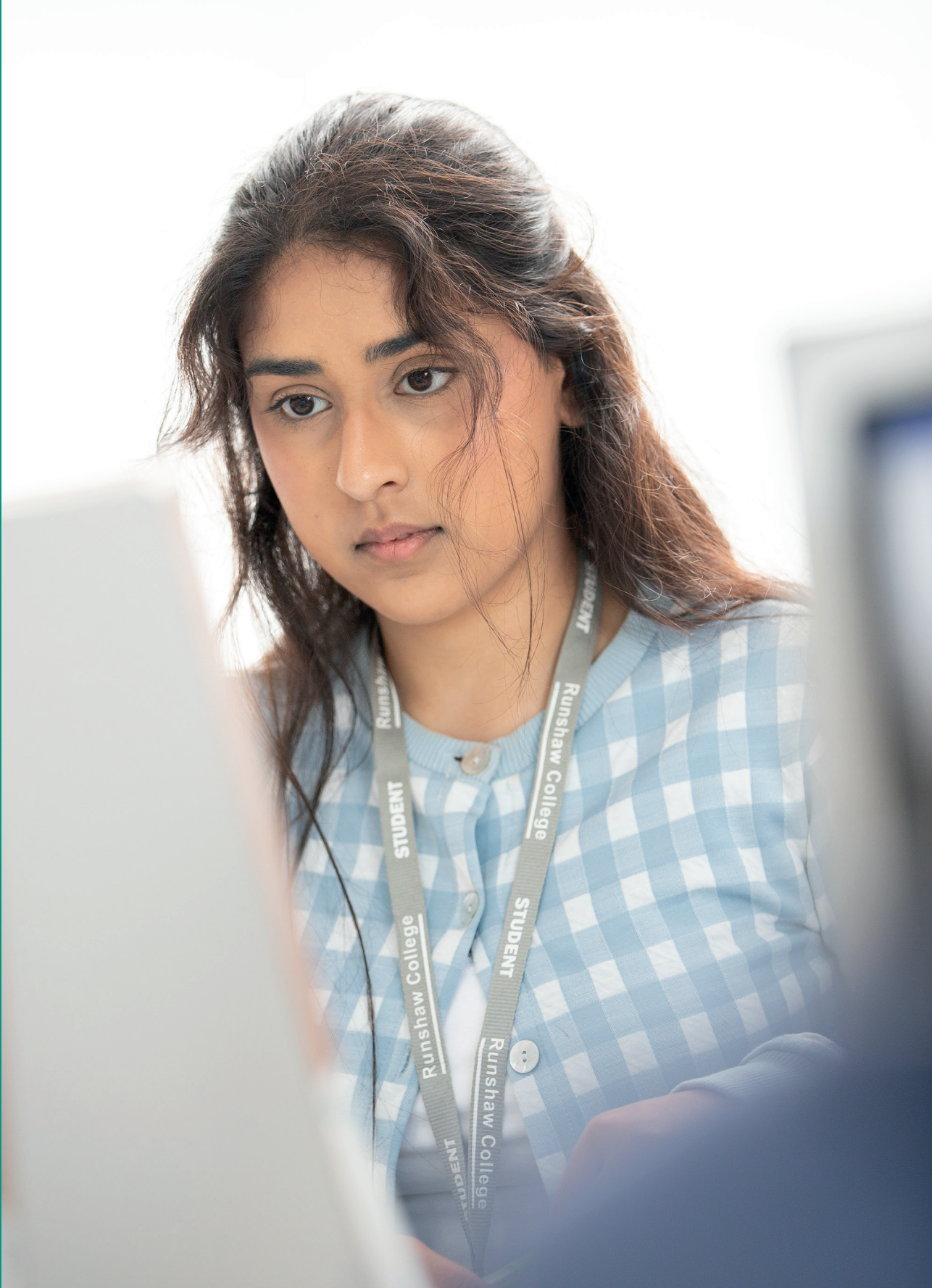
T-LEVELS
THE NEXT LEVEL QUALIFICATION

Digital T Level **71**

A vocational IT course at Runshaw is a fantastic pathway into the IT industry. Whether it is furthering your knowledge at university or going straight into employment, our IT courses will take you where you want to go!

All of our courses are exciting and wide-ranging as we want you to leave multi-skilled and aware of all the opportunities that exist within the industry.

Please see our course leaflets at www.runshaw.ac.uk and press the **'Apply' button**. For guidance about what careers subjects can lead on to please access nationalcareers.service.gov.uk



BTEC Level 1 IT with Business

What will I learn?

Do you like working with computers? If your answer is 'yes', then you should consider studying a BTEC Level 1 in IT with Business!

This is a practical course and you will learn about working in the industry, PC systems, communication methods and using the internet and digital devices. In addition to developing excellent IT skills, you will also develop good personal effectiveness skills which are essential for success in employment.

As part of the course you will also study English and Maths and will develop employability skills to help you to reach your full potential.

How will I be assessed?

The course is delivered through a combination of lessons and practical workshops and is assessed through coursework.

What enrichment can I look forward to?

To stimulate ideas and widen your college experience there are many opportunities to go on college trips and get to know other vocational students.

Activities can include:

- course related trips and visits
- access to the full range of college enrichment activities
- voluntary work
- fundraising activities
- ESports Academy

What progression is there?

Successful completion of this course may lead to progression in college, an Apprenticeship, or junior employment.

#Future

IT Consultant

Programmer

Security Analyst

Software Developer

System Analyst

Systems Manager

#YOU

1:1 support
sessions

Employability skills
Progress to Degree
Apprenticeship
& University

#ENTRY

1x Grade 3,
1x Grade 2 and
Maths or English
Language at
Grade 2

Please see our course leaflet
at www.runshaw.ac.uk
for more information.

For guidance about what careers
subjects can lead on to please access
nationalcareers.service.gov.uk

Level 2 T Level Transition

What will I learn?

Do you like working with computers? Would you like a career in the IT industry? Do you like working independently and problem solving? If the answer is 'yes' to any of the questions above, then you should consider studying T Level Transition course at Level 2.

The course is mostly practical, with theory to underpin your understanding and prepare you for external assessment, and is delivered through a combination of lessons and practical workshops. You will study a variety of topics and develop key skills in:

- Data Analysis
- Cyber Security
- Programming

As part of the course, you will also study English and/or Maths, and take part in a range of workshops to further develop your employability skills and prepare you for future progression.

How will I be assessed?

All units will be assessed through coursework and a summative independent project.

What enrichment can I look forward to?

You will have the chance to access a wide variety of enrichment activities to allow you to explore interests and talents.

Activities can include:

- guest speakers
- outdoor pursuit activities
- fundraising activities
- access to all the college enrichment activities
- voluntary work
- ESports Academy
- Digital Skills Academy

What progression is there?

Successful completion of the course may give you the opportunity to progress on to the Level 3 Digital T Level, L3 BTEC IT, Apprenticeships or employment.

#Future

Computer Support Specialist

Database Analyst

Government Technologist

Privacy Coordinator

Web Marketing Manager

#YOU

Team building
Voluntary work/
Work experience
Theoretical and
practical project
work

#ENTRY

5x Grade 4s,
including English
& Maths

Please see our course leaflet at www.runshaw.ac.uk for more information.
For guidance about what careers subjects can lead on to please access nationalcareers.service.gov.uk

BTEC Level 2 ESports

What will I learn?

Do you like gaming? Ever thought that this love of gaming could be a future career? If you answered 'yes' to both questions, then this course could be for you. From day one you will be introduced to the ESports industry, establishing the different career paths that are available.

Whilst this is not a 'Gaming Course', the course will focus on a wide range of topics and apply them to the ESports industry, including:

- Health and Wellbeing in ESports
- ESports organisations and teams
- Entrepreneurship
- Event Planning and Project management
- Streaming and Shoutcasting

How will I be assessed?

All units will be assessed through coursework and portfolio.

What enrichment can I look forward to?

You will have the chance to access a wide variety of enrichment activities to allow you to explore interests and talents.

Activities can include:

- guest speakers
- outdoor pursuit activities
- fundraising activities
- access to all the college enrichment activities
- voluntary work
- ESports Academy
- Digital Skills Academy
- Gamer Expo

What progression is there?

The Pearson BTEC Level 2 Award in ESports has a primary focus on progressing to further education. Learners taking this qualification may want to progress to further study such as Pearson BTEC Level 3 Nationals in ESports, Information Technology, Creative Media, Sport, Enterprise and Entrepreneurship or Business.

#Future

Information Technology

Creative Media

Sport

Enterprise & Entrepreneurship

Business

#YOU
Cutting
edge equipment
ESports Champions
STEM based
Careers

#ENTRY
4x Grade 3s, please
note you will also
resit your Maths &
English if they are
not a 4 or above

Please see our course leaflet
at www.runshaw.ac.uk
for more information.
For guidance about what careers
subjects can lead on to please access
nationalcareers.service.gov.uk

BTEC Level 3 ESports

What will I learn?

The Level 3 BTEC in ESports is a course that blends a range of content from different subject areas including IT, Business, Media, Psychology and Sport. You will develop a range of knowledge and skills in each of these areas, applying them in context to the ESports industry.

Units of study can include:

- ESports Skills, Strategies and Analysis
- Enterprise and Entrepreneurship in the ESports Industry
- Health, Wellbeing and Fitness for ESports Players
- ESports Events (event planning)
- Producing an ESports Brand
- Video Production
- Shoutcasting
- Nutrition for ESports Performance
- ESports Coaching
- Psychology for ESports Performance
- Ethical and Current Issues in ESports
- Sports and ESports Law and Legislation
- Launching Your ESports Enterprise
- Games Design

How will I be assessed?

The course is delivered as a combination of theory and practical, and you will be assessed via portfolio evidence for both the mandatory and optional units. This course has no external assessment or examinations.

What enrichment can I look forward to?

Whilst this is not a gaming course, you will have the opportunity to be part of the ESports Academy and compete in the British ESports Championships in either League of Legends, Rocket League or Valorent. Additional in-college competitions will also be arranged throughout the year as part of the course.

What progression is there?

Upon completion of further study, you would be able to pursue a career in Tech/Digital/STEM industries/ICT, Marketing, Entrepreneurship, Creative Media, Business Studies, Game Development, Academic Degree up to Level 7 or Apprenticeship up to Level 6.

#Future

Data Engineer

Marketing

Editorial Manager

Game Development

Web Developer

#YOU
Cutting
edge equipment
ESports Champions
STEM based
Careers

#ENTRY
5x Grade 4s incl.
English & Maths,
and no less than
a Grade 3 in the
other

Please see our course leaflet
at www.runshaw.ac.uk
for more information.
For guidance about what careers
subjects can lead on to please access
nationalcareers.service.gov.uk

RQF Level 3 IT (with optional ESports Specialism)

What will I learn?

The course is a technical, work-related course designed for those wishing to learn how to be professionals in the computing industry. You will complete projects and assignments based on realistic workplace situations and business scenarios.

- Key Digital Skills covered in this course include:
- Productivity Skills: MS Excel, MS Access, Project Management
- Programming: HTML, CSS, Python
- Data Analysis: Big Data
- Digital Design: Digital Graphics, Animation
- Digital Marketing: Social Media, Content Creation, Analytics

Learners who chose this course will develop knowledge and skills in a range of technical, creative and productivity areas, preparing them for progression into the workplace or further study. At the end of year 1, learners will have the opportunity to opt for an additional specialism in either IT or ESports.

The opportunity to study ESports will see you learn a range of core creative and technical digital skills and apply them in one of the fastest growing industries in the world.

Please note that if you do want to progress onto Games Development, Computer Science, Software Engineering/ Development or Programming degrees, you will normally need GCSE grade 5 or equivalent in Maths.

How will I be assessed?

The course is delivered as a combination of theory and practical, and you will be assessed through both a portfolio and external assessment for core units set by the exam board. Internal assessments use a wide variety of methods including presentations, reports, posters, podcasts, role-plays and interactive quizzes.

What progression is there?

Upon completion of further study, you would be able to pursue a career in computing, or alternatively, previous students have gone on to higher education courses at great universities.

#Future

Digital Production

Games Developer

Programmer

Teacher

Web Designer

#YOU
100% pass rate
Amazing
progression
ESports
Academy

#ENTRY
5x Grade 4s,
including English &
Maths

Please see our course leaflet
at www.runshaw.ac.uk
for more information.
For guidance about what careers
subjects can lead on to please access
nationalcareers.service.gov.uk

T Level Digital

#Future

Digital Production

Games Developer

Programmer

Teacher

Web Designer

What will I learn?

Year 1: You will cover topics including:

- business context
- culture, including ethical and moral issues
- data management and modelling
- digital analysis
- digital environments
- legislation
- security
- software and hardware testing

Year 2: You will follow an Occupational Specialism in Digital production, Design and Development. You will develop the necessary knowledge and skills to achieve 'Threshold Competence' in this specialist area.

Upon achieving Threshold Competence you will have demonstrated that you can:

- design, implement and test software
- change, maintain and support software
- create solutions
- apply ethical principles and manage risks in line with the law when developing software

As part of the T Level you will also complete a substantial work placement (minimum of 45 days).

How will I be assessed?

Year 1: 2 externally assessed examinations and 1 employer set project

Year 2: Synoptic project and an industry placement

What enrichment can I look forward to?

You can look forward to an exciting range of enrichment that supports your learning, including amazing trips, and industry expert guest speakers.

What progression is there?

T Levels will provide you with opportunities to progress to university, Apprenticeships, or full time employment in related specialist areas.

#YOU
Practical learning
Industry placements
Professional accreditation

#ENTRY
5x Grade 4s,
including English & Maths

T-LEVELS
THE NEXT LEVEL QUALIFICATION

Please see our course leaflet at www.runshaw.ac.uk for more information.
For guidance about what careers subjects can lead on to please access nationalcareers.service.gov.uk

The School of Professional Engineering

Applied Professionals in **Engineering 74**

T Level Design **Engineering 75**

T Level **Civil Engineering 76**

T-LEVELS
THE NEXT LEVEL QUALIFICATION

A Professional Engineering course at Runshaw is a fantastic pathway into the world of engineering. Whether it is furthering your knowledge at university or going straight into employment, our engineering courses will take you where you want to go!

Our courses are exciting, technically challenging and wide-ranging, so you are prepared for all the amazing career opportunities that exist within the industry.

Please see our course leaflets at www.runshaw.ac.uk and press the '**Apply**' button. For guidance about what careers subjects can lead on to please access nationalcareers.service.gov.uk



Ultimaker

BTEC Level 2 & 3 Applied Professionals in **Engineering**

What will I learn?

The Applied Professional Engineering courses incorporate exciting opportunities for students to develop their understanding and learning of engineering, in preparation for progression into engineering apprenticeships or continuing to university.

The programme allows for a one-year transition programme, studying on a L2 BTEC or L3 Extended Diploma in Mechanical Engineering for two years equivalent to 3 A Levels, which gives learners the opportunity to develop key underpinning skills and knowledge, in fundamental subject areas, such as; Engineering Design, Engineering Mathematics and Computer Aided Design, all taught by industry expert Lecturers. The Engineering Maintenance unit has been introduced to allow students to develop practical skills which further underpin their essential skillset, in readiness for progression.

In addition to engineering you will also study Maths and English GCSE's in order to maximise your progression opportunities.

An innovative and exciting addition to the Applied Professional study programme is the introduction of a structured work placement package. This will include students participating in real work experience in the engineering industry and this will be facilitated by a structured calendar on a day release basis.

How will I be assessed?

Assessment of student work will include project and assignment written and practical work, with the addition of external examinations.

What progression is there?

Apprenticeships or university are the main progression for students on the Applied Professional courses. Successful completion of the one-year transition year, will allow learners the opportunity to progress onto further study on the Professional Applied programme. This incorporates an advanced level of study, once again covering a broad depth of engineering subjects.

#Future

Aerospace Engineer

Armed Forces

Manufacturer

Mechanical Engineer

Structural Engineer

#YOU

A fantastic blend
of practical and
theory

Amazing
progression

#ENTRY

Level 2 - Maths and
Science Grade 3,
English at Grade
2 plus two more
GCSEs at Grade 3
(4 x GCSEs at 3 in
total)

#ENTRY

Level 3 - Maths and
Science Grade 4,
English at Grade
3 plus two more
GCSEs at Grade 4
(5 x GCSEs at
4 in total)

Please see our course leaflet
at www.runshaw.ac.uk
for more information.

For guidance about what careers
subjects can lead on to please access
nationalcareers.service.gov.uk

T Level Design Engineering

#Future

Automotive Engineer

CAD Technician

Civil Engineer

Maintenance Engineer

Mechanical Engineer

Nuclear Engineer

What will I learn?

Inspired and supported by a range of industrial partners, this unique course will develop your understanding of Engineering and will push and challenge your ideas and thought processes within Design.

Within your first year of study you will explore a range of topics including principles of design, design processes and customer & client requirements. You will research the past, present & future of Engineering to further your knowledge and will gain a deeper understanding of the Maths & Science behind Design within Manufacturing.

You will study within the School of Professional Engineering where you will develop your skills and knowledge to a higher level, ready for your future progression into employment or higher study. You will also work for 45 days (315 hours), within the two years, on an Industry Placement to further your knowledge and skills.

How will I be assessed?

There will be a considerable amount of written and calculated work and investigation. The course is holistic which means that you will get a much better grasp of all of the content as it interweaves design, safety, and applied mathematics into each project.

The course encompasses two exams, which cover all of the core content, leading into an employer set project which supports all of the learning which has taken place.

What enrichment can I look forward to?

Students have previously enjoyed guest speakers from national & international Engineering such as Cadent Gas, Robertson, and a range of local Engineering companies. There are annual residential trips to places such as London and Design your Future showcases, plus other events such as sports days and half termly fun days and team building.

What progression is there?

Students can progress onto Apprenticeships with a range of companies and training providers, as well as on to university to study a wide range of courses including Engineering, Architecture, Automotive and Mechanical Engineering, to name a few. Working alongside exciting professional industries opens the door to so many opportunities.

#YOU

Outstanding facilities
Great progression
Specialist 45 day Industry Placement

#ENTRY

Grade 5 in Maths and Science, English at Grade 4 and two other GCSEs at Grade 4

T-LEVELS
THE NEXT LEVEL QUALIFICATION

Please see our course leaflet at www.runshaw.ac.uk for more information.
For guidance about what careers subjects can lead on to please access nationalcareers.service.gov.uk

T Level Civil Engineering

What will I learn?

T Levels are a fresh and exciting alternative to A levels as they offer a work focused experience, which combines academic study of the highest quality with practical industry related skills. In addition to this, T Levels include a mandatory 45 day Industry Placement that has been built into the course to further develop individual skills. If you wish to work in the construction sector with a focus on Civil Engineering, then this T Level is for you.

This course is best suited to students who prefer a practical approach to learning, yet want a largely classroom-based course. The T Level is equivalent to 3 A Levels and focuses on vocational skills that can help you obtain skilled employment, university study or an Apprenticeship.

How will I be assessed?

Students will be assessed through observations, written assignments, and an employer set project (1st year) and exams and an occupational specialist project (2nd year).

The T Level certificate includes:

- an overall grade for the T Level, shown as pass, merit, distinction or distinction*
- a separate grade for the core component, using A* to E
- a separate grade for the occupational specialism (Civil Engineering), shown as pass, merit or distinction

What progression is there?

This course is suitable for anyone wanting a career in civil engineering. Students can progress onto roles such as civil engineering technician, CAD technician, consulting civil engineer and design engineering. Students studying engineering based subjects at Runshaw College have progressed on to university to study a wide range of courses, including Engineering, Robotics, and Architecture, to name a few, and into careers with a variety of companies, including Rolls Royce, BAE Systems and Cadent Gas.

#Future

Architectural Technician

Building Services

Civil Engineer

Project Manager

Quantity Surveyor

#YOU

**Revit Academy
Specialist 45 day
Industry Placement
Outstanding
Teaching &
Learning**

#ENTRY

**Grade 5 in Maths
and Science,
English at Grade
4 and two other
GCSEs at
Grade 4**

T-LEVELS
THE NEXT LEVEL QUALIFICATION

Please see our course leaflet
at www.runshaw.ac.uk
for more information.

For guidance about what careers
subjects can lead on to please access
nationalcareers.service.gov.uk



Foundation Learning

Foundation Studies and Skills **80**

Future **Skills 81**

Events, Tourism and Catering Level 1 **82**

Foundation learning courses are designed to introduce students to college study whilst improving their basic skills. The courses run over either 3 or 4 days a week.

Foundation learning has a variety of pathways. The courses are designed for young people who need extra support and time to develop their basic skills to enable them to progress in college. There are no formal qualifications needed to apply for these courses.

Please see our course leaflets at **www.runshaw.ac.uk** and press the '**Apply**' button. For guidance about what careers subjects can lead on to please access **nationalcareers.service.gov.uk**



Foundation Studies and Skills

Students on Foundation Studies and Skills (Entry levels 2 & 3) will study:

OCR Life Skills, which includes portfolio building and practical assessments in a range of life skills, including:

- Health and lifestyle
- Using public transport
- Supporting the local community
- Food safety and Cooking
- Managing my own money
- Functional Skills – English & Maths

Basic Skills

Designed for students who need extra support and time to develop life and study skills.

Enrichment Opportunities

- trips
- first aid
- volunteering
- Duke Of Edinburgh

Progression Routes

- Higher level Foundation Skills course

#Future

Administrator

Catering Staff

Childcare Worker

Cleaner

Healthcare Worker

Shop Assistant

#YOU

**Exciting
residentials
Duke of Edinburgh
Gain valuable
employment
skills**

#ENTRY

**Designed for young
people who need extra
support and time to
develop their basic
skills to enable them to
progress into college.
Working towards
E2/3**

Please see our course leaflet
at www.runshaw.ac.uk
for more information.
For guidance about what careers
subjects can lead on to please access
nationalcareers.service.gov.uk

Future Skills

Future Skills is a taster qualification and introduction to studying at college. The course is taught over 4 days a week.

Future Skills is a course designed for young people who need an extra year to find their chosen vocational career path and have studied at GCSE level. There are no formal qualifications needed to apply for this course. Students will have an initial assessment to ensure they are studying at an appropriate level.

Students will study:

A Gateway Certificate in Catering and Hospitality studies, which includes portfolio building and practical assessments in a range of vocational subjects that may include:

- catering
- customer service
- health needs
- planning events
- food hygiene and food safety
- tailored English and Maths timetable to support your development

Enrichment Opportunities

To enhance the learning experience and develop employability skills students will also take part in a range of enrichment opportunities:

- team building
- trips and visits
- work based visits
- first aid
- volunteering
- guest speakers
- Duke of Edinburgh
- V30 Award

Progression Routes

- Higher level college course (level dependent on your GCSE results)
- Apprenticeships
- Employment

#Future

Chef

Gardener

Health Care Worker

Public Sector Worker

Receptionist

Retail

#YOU

Hands on learning
Outstanding facilities
Superb student experience
Work based visits

#ENTRY

Designed for young people who need an extra year to find their chosen vocation and career path

Please see our course leaflet at www.runshaw.ac.uk for more information.
For guidance about what careers subjects can lead on to please access nationalcareers.service.gov.uk

Level 1 Events, Tourism and Catering

#Future

Apprentice

Chef

Customer Service

Graphic Designer

Higher Education
Student

What will I learn?

This one year course is designed to focus on the diverse tourism and hospitality industry by developing tourism knowledge and chef skills, and providing students with transferable skills. Students will learn in excellent facilities such as the industrial kitchen and mock aircraft and the course is delivered by enthusiastic professionals.

This practical course will cover a variety of units including:

- basic food preparation & cooking
- the UK Tourism Industry
- serving food and drink
- planning a trip to a visitor attraction
- organising an event

How will I be assessed?

You will be assessed through a portfolio of evidence and practical observation.

What enrichment can I look forward to?

To enhance the learning experience and develop employability skills students will also take part in a range of enrichment opportunities:

- team building
- trips and visits
- work based visits
- volunteering

What progression is there?

This programme will give you all the basic skills you need to progress onto Level 2 Professional Diploma in Culinary Skills or Level 2 Tourism or into the world of work.

#YOU

Hands on learning
Outstanding employer engagement
Outstanding facilities

#ENTRY

1x GCSE at Grade 3, 1x GCSE at Grade 2 & Maths or English Language at Grade 2 and Grade 1 in the other

Please see our course leaflet at www.runshaw.ac.uk for more information.

For guidance about what careers subjects can lead on to please access nationalcareers.service.gov.uk



Hair & Media Make-up

Hair & Media Make-up C&G Level 2 **86**

Hair & Media Make-up C&G Level 3 **87**

Our Hair & Media Make-up courses at Runshaw are a fantastic pathway into the industry, whether it is furthering your knowledge with an Apprenticeship or going straight into employment, our courses will take you where you want to go!

Our courses are exciting and wide-ranging as we want you to leave multi-skilled and aware of the opportunities that exist within the industry.

Please see our course leaflets at **www.runshaw.ac.uk** and press the **'Apply' button**. For guidance about what careers subjects can lead on to please access **nationalcareers.service.gov.uk**



C&G Level 2 Hair & Media Make-up

What will I learn?

This exciting course provides a starting point towards a career in the professional hair and make-up industry.

Whether you are interested in a career in high fashion, the bridal industry, photography, film or TV, this course provides a foundation in the techniques used in the world of professional hair and make-up.

The course will look at the basic skills needed to work in the make-up field, giving you skills in basic make-up (day, evening, special occasion and corrective make-up), brow shaping and false eyelash application. In addition you will learn the art of photographic make-up, body art design and tanning. You will also learn a range of hairdressing techniques and styles, ranging from the art of colouring hair, dressing hair, and making and styling a hair addition.

How will I be assessed?

Assessments take place throughout the year through practical observations, assignments and online exams.

What enrichment can I look forward to?

Activities such as competition work, shows, guest speakers, volunteering, and team-building pursuits are built into your course. In addition you will have access to a varied and full enrichment calendar. There may be options for you to attend workshops which will provide you with the opportunity to gain further bolt on qualifications that will give you a head start in successful employment. You will also have the opportunity to participate in all college enrichment activities which will enhance your college experience.

What progression is there?

Successful completion of the course can lead to progression at college, an Apprenticeship, Level 3 Media Make-up or employment.

#Future

Apprentice

Salon Manager

Hair Stylist

Make-up Artist

Assistant

#YOU

**Theoretical and practical learning
Links to industry & Guest Speakers
Outstanding facilities**

#ENTRY

4x Grade 3s including Maths and English and Grade 2 in 2 other subjects

Please see our course leaflet at www.runshaw.ac.uk for more information.
For guidance about what careers subjects can lead on to please access nationalcareers.service.gov.uk

C&G Level 3 Theatrical, Special Effects, Hair and Media Make-up

#Future

Creative Stylist

Hair Stylist

Make-up Artist

Prosthetics Designer

What will I learn?

This exciting course is designed to develop the skills and techniques required for a career in the theatrical and media make-up and hair industry. It covers professional make-up and hairdressing techniques that are used in fashion, TV, film, theatre and photographic industries.

You will use a wide range of research methods to create design plans which you will use to develop appropriate skills in media make-up for casualty TV (cuts, bruises, scars, and wounds), applying fashion and photographic make-up for commercial and fashion work, along with historical and period make-up, creative hair design and body art.

How will I be assessed?

Assessments take place throughout the year through practical observations, assignments and online exams.

Your practical work will be graded: Pass, Merit or Distinction. The work is collated in a portfolio of evidence. Your tutors will provide you with feedback throughout your course ensuring you are fully prepared for all assessments.

What enrichment can I look forward to?

Activities such as competition work, shows, guest speakers, volunteering, and team-building pursuits are built into your course. In addition you will have access to a varied and full enrichment calendar.

There may be options for you to attend workshops which will also provide you with the opportunity to gain further bolt on qualifications that will give you a head start in successful employment. You will also have the opportunity to participate in all college enrichment activities which will enhance your college experience.

What progression is there?

Successful completion of the course could lead to employment or higher education.

#YOU

Outstanding facilities

Career progression
Creative focus

#ENTRY

Pass at Level 2 in Hair & Media Make Up

Please see our course leaflet at www.runshaw.ac.uk for more information.
For guidance about what careers subjects can lead on to please access nationalcareers.service.gov.uk

Health, Social Care & Childhood Studies

Health and Social Care BTEC Level 1 Introductory Diploma **90**

Caring for Children under 5 BTEC Level 1 Introductory Diploma **91**

Children's Play, Learning and Development (Early Years Practitioner) Technical Diploma **92**

Children's Play, Learning and Development (Early Years Educator) BTEC Level 3 **93**

Health & Social Care BTEC Level 2 **94**

Health & Social Care BTEC Level 3 **95**

Health T Level **96**

T-LEVELS
THE NEXT LEVEL QUALIFICATION

A Health, Social Care and Childhood Studies course at Runshaw is a fantastic pathway into the world of Health and Social work. Whether it is furthering your knowledge at university or going straight into employment, our Health, Social Care and Childhood Studies courses will take you where you want to go!

All our courses are exciting and wide-ranging as we want you to leave multi-skilled and aware of all the opportunities that exist within the industry.

Please see our course leaflets at **www.runshaw.ac.uk** and press the '**Apply**' **button**. For guidance about what careers subjects can lead on to please access **nationalcareers.service.gov.uk**



BTEC Level 1 Introductory Diploma Health & Social Care

What will I learn?

The course is designed for students considering studying Health and Social Care as an option in the future and for those wanting to know what it is like to work in a care setting. It is an introductory course and will allow you to learn about not only the Health and Social Care industry, but also about your own skills and qualities. Some of the units covered in this course include: communication skills, advising others about healthy lifestyles, and working with others in Health and Social Care.

As part of the course you will also study English and Maths to enhance your employability skills.

How will I be assessed?

Assessment takes place throughout the course in a variety of ways, including posters, presentations and written assignments.

What enrichment can I look forward to?

Voluntary work, induction activities and team building, guest speakers from industry, trips and visits, access to all college enrichment activities.

What progression is there?

Successful completion of the course and additional qualifications may lead to progression within college or onto an Apprenticeship.

#Future

Healthcare Assistant

Midwife

Nurse

Occupational Therapist

Paramedic

Social Worker

#YOU

Volunteering opportunities

Theoretical and practical learning

Guest speakers

#ENTRY

1x Grade 3, 1 x Grade 2 and Maths or English Language at Grade 2

Please see our course leaflet at www.runshaw.ac.uk for more information.

For guidance about what careers subjects can lead on to please access nationalcareers.service.gov.uk

BTEC Level 1 Introductory Diploma

Caring for Children

What will I learn?

The course is designed for students considering studying a career in childcare as an option in the future, and for those wanting to know what it is like to work in a childcare setting. It is an introductory course and will allow you to learn about not only the childcare industry, but also about your own skills and qualities. Some of the units covered in this course include: planning safe environments for children, communication skills, and supporting children with creativity through everyday activities.

As part of the course you will also study English and Maths to enhance your employability skills.

How will I be assessed?

Assessment takes place throughout the course in a variety of ways, including posters, presentations and written assignments.

What enrichment can I look forward to?

Voluntary work, induction activities and team building, guest speakers from industry, trips and visits, as well as access to all college enrichment activities.

What progression is there?

Successful completion of the course and additional qualifications may lead to progression within college or onto an Apprenticeship.

#Future

Early Years Practitioner

Early Years Teacher

Holiday Club Assistant

Playgroup Assistant

Primary School Teacher

Teaching Assistant

#YOU

Enrichment
Activities

Clear progression
pathway

Work Placement
Experience

#ENTRY

4x Grade 3s, please
note you will also
resit your Maths &
English if they are
not a 4 or above

T-LEVELS
THE NEXT LEVEL QUALIFICATION

Please see our course leaflet
at www.runshaw.ac.uk
for more information.

For guidance about what careers
subjects can lead on to please access
nationalcareers.service.gov.uk

BTEC Level 2 **Children's Play, Learning and Development (EYP)**

#Future

After School Worker

Early Years Educator

Early Years Teacher

Playgroup Assistant

Primary Teacher

Teaching Assistant

What will I learn?

This is a one year course for anyone interested in working with children as a teaching assistant or Early Years Practitioner. From this, progressing onto higher level courses can lead to qualifications which will help you to gain employment in careers such as teaching or as an Early Years Educator.

The units studied cover all aspects of understanding and supporting young children's play and development, including supporting children's physical care needs, supporting children's development through play, child development, and developing professional practice skills working in the early years.

There will be the opportunity to experience a number of work placements in a variety of childcare settings, such as primary schools, day nurseries or nursery schools, working with children aged 0-5 years. Please note that as part of the course you will also study English and/or Maths, and you will need to complete a Disclosure and Barring Services (DBS) check to confirm you do not have any cautions or convictions which would put in question your suitability to work in these areas.

How will I be assessed?

The course is assessed through coursework which takes the form of assignments, presentations, external assessment and successful completion of each placement.

What progression is there?

The course prepares you to progress in college, onto an Apprenticeship, or directly into employment as a Nursery Practitioner, as the qualification you will get provides a licence to practice as a Level 2 early years practitioner.

#YOU

Voluntary work
Guest speakers
Trips and visits

#ENTRY

4x Grade 3s,
please note you
will also resit your
Maths & English if
they are not a 4 or
above

Please see our course leaflet
at www.runshaw.ac.uk
for more information.

For guidance about what careers
subjects can lead on to please access
nationalcareers.service.gov.uk

BTEC Level 3

Children's Play, Learning and Development (EYP)**What will I learn?**

This is a two year course for those wishing to work with children in either early years, primary, or special needs settings. You will complete four different placements gaining experience working with children aged 0-7 years 11 months, completing 750 mandatory placement hours.

The units studied cover all aspects of understanding and supporting children and how to apply this knowledge in the workplace, including Child Development, Play and Learning, Keeping Children Safe and Reflective Practice. Optional specialist units include Healthy Eating in Early Years, Children's Development Outdoors and Supporting Children's Imaginative Play and Creativity. You will also complete a portfolio of evidence in each placement to demonstrate your skills working with young children.

Please note that due to the placements you will need to complete a Disclosure and Barring Services (DBS) check to confirm you do not have any cautions or convictions which would put in question your suitability to work in these areas.

How will I be assessed?

The course is assessed through coursework which takes the form of assignments, successful completion of each placement, including a portfolio of evidence to demonstrate your skills working with children, and external assessments.

What enrichment can I look forward to?

You will experience an exciting range of activities, including visiting speakers, trips and team building exercises.

What progression is there?

Many students go on to further study at universities such as Liverpool, Chester, and Edge Hill for Primary or Early Years Teaching; or directly into employment as an Early Years Educator, as the qualification you will get provides a licence to practice as a Level 3 Early Years Educator.

#Future

Educational
Psychologist

Early Years Educator

Primary Teacher

Teaching Assistant

Speech & Language
Therapist

#YOU

Weekly work
placement
Superb student
experience
Theoretical and
practical
learning

#ENTRY

5x Grade 4s,
including English &
Maths. Grade 4 in
English Language
& Science for
progression to
teaching

Please see our course leaflet
at www.runshaw.ac.uk
for more information.

For guidance about what careers
subjects can lead on to please access
nationalcareers.service.gov.uk

BTEC Level 2 Health & Social Care

What will I learn?

This is a one year course for anyone who is interested in working with people, especially groups such as the young or the elderly who need extra help or support.

Many students go on to follow careers in one of the caring professions. You will study a variety of topics including communication, supporting health and well-being, and working in health and social care environments. You will also have the opportunity to attend work placements to develop your skills working with others.

Please note that as part of the course you will study English and/or Maths and due to the placements you will need to complete a Disclosure and Barring Services (DBS) check to confirm you do not have any cautions or convictions which would put in question your suitability to work in these areas.

How will I be assessed?

The course is assessed through coursework which takes the form of assignments, set at intervals throughout the year, and some external assessments.

What enrichment can I look forward to?

Activities can include:

- guest speakers
- visits relevant to the course
- outdoor pursuit activities
- fundraising activities
- access to all college enrichment activities

What progression is there?

Successful completion of the course can lead to progression in college, onto an Apprenticeship, or employment.

#Future

Children's Nurse

Family Support Worker

Healthcare Worker

Midwife

Occupational Therapist

Social Worker

#YOU

Excellent student support
Visiting Speakers
Industry links

#ENTRY

4 x Grade 3s, please note you will also resit your Maths & English if they are not a 4 or above

Please see our course leaflet at www.runshaw.ac.uk for more information.

For guidance about what careers subjects can lead on to please access nationalcareers.service.gov.uk

BTEC Level 3

Health & Social Care

#Future

Children's Nurse

Mental Health Nurse

Midwife

Paramedic

What will I learn?

This course develops the skills and knowledge required for those who wish to pursue a career in Health and Social Care. You will enjoy work experience in carefully selected placements and study units covering different aspects within this field. Some of the units studied are: Working in Health and Social Care, Infection Prevention and Control, Supporting Additional Needs, and Meeting Nutritional Requirements.

Placement is mandatory for completion of the course and therefore you must be willing to work in a variety of settings. Current settings include: care homes, day centres, disability resource centres, doctors surgeries, and pharmacies. You will also need to demonstrate good interpersonal skills, be open-minded and have a caring nature/professional attitude.

Please note that due to the placements you will need to complete a Disclosure and Barring Services (DBS) check to confirm you do not have any cautions or convictions which would put in question your suitability to work in these areas.

How will I be assessed?

Assessments include: written assignments, case studies, posters, leaflets, role plays, presentations and external assessments.

What enrichment can I look forward to?

Unit specific trips, team building activities and guest speakers from vocational areas.

What progression is there?

Many students go on to further study at universities such as Liverpool, Salford and Edge Hill, whilst many also progress to careers in social work, nursing or psychology.

#YOU

Excellent Student Support

Positive learner survey feedback
Clear Career Pathways

#ENTRY

5x Grade 4s, including English & Maths. Grade 4 in English Language and Science needed if intending to progress to nursing

Please see our course leaflet at www.runshaw.ac.uk for more information.

For guidance about what careers subjects can lead on to please access nationalcareers.service.gov.uk

T Level Health

What will I learn?

This course develops the skills and knowledge required for those who wish to pursue a career in Health and Social care.

You will enjoy industry experience in carefully selected placements and study units covering different aspects within this field. Some of the units studied include: The Healthcare Sector, Scientific and Clinical Practice, Providing Person-centred Care, Health and Wellbeing, Infection Prevention and Control in Health Specific Settings, and Safeguarding.

How will I be assessed?

External assessments, case studies, practical assessments and professional discussions. As part of achieving the overall T Level programme, you are also required to complete a minimum of 315 hours industry placement (approximately 45 days).

What enrichment can I look forward to?

Unit specific trips, team building activities and guest speakers from the Health Sector.

What progression is there?

After successfully completing this course you will be able to progress onto a degree in courses such as Nursing, Mental Health Nursing, Physiotherapy, Speech and Language Therapy and Dietetics. Alternatively, you may choose to progress to a higher level Apprenticeship or find employment within the NHS or social care settings.

#Future

Adult Nursing

Support Worker

Mental Health Nurse

Midwife

Senior Healthcare Worker

#YOU

Industry placements
Practical learning
Professional accreditation

#ENTRY

5x Grade 4s,
including English &
Maths. Grade 4 in
English Language &
Science needed for
progression

T-LEVELS
THE NEXT LEVEL QUALIFICATION

Please see our course leaflet at www.runshaw.ac.uk for more information.
For guidance about what careers subjects can lead on to please access nationalcareers.service.gov.uk



Media

Creative Media Production UAL Level 2 **100**

Creative Media Production UAL Level 3 **101**

A vocational Media course at Runshaw is a fantastic pathway into the Media industries. Whether it is furthering your knowledge at University or going straight into employment, our Media courses will take you where you want to go!

All our courses are exciting and wide-ranging as we want you to leave multi-skilled and aware of all the opportunities that exist within the industry.

Please see our course leaflets at **www.runshaw.ac.uk** and press the **'Apply' button**. For guidance about what careers subjects can lead on to please access **nationalcareers.service.gov.uk**



UAL Level 2 Creative Media Production

What will I learn?

This course allows you to discover your creativity with our team of industry specialists. It links theory with real media practice, and you will study:

- practical camera, soundtrack and editing production
- film promotion (trailer, film posters, interactive, social media)
- photographic and Photoshop skills
- magazine design (front cover, page layout, social media and interactive elements)
- audio skills including radio drama, interviewing and podcasting

You should also have an active interest in the media, enjoy working with other people and you should be both creative and love to learn about new techniques and software. The media industry is an exciting dynamic industry and you also need to be inquisitive, versatile and adapt to new technological changes.

How will I be assessed?

You will work on a variety of practical creative briefs that reflect the media industry. Assessment is through an online blog where you will reflect and advance your own learning. You will have the opportunity to develop your own personal interests and we will give you the skills to confidently research, plan, and produce professional media productions.

What enrichment can I look forward to?

You will get the chance to participate in Runshaw TV, our college media production company which records events and produces videos for clients. We run inspiration projects that have included enrichment on make-up effects, CGI effects, Motion Graphics and a variety of guest speakers from a range of media industries. We also plan a programme of visits that have included film festival screenings, photographic and art exhibitions, Emmerdale, and Harry Potter Studios.

What progression is there?

Most of our students from the Level 2 Media Production course progress onto our Level 3 Media Production course at Runshaw College. As this is a media skills based course, some students also seek radio, social media, web design or media business Apprenticeships from local companies.

#Future

Camera Operator

Director

Editor

Journalist

Magazine Editor

TV Producer

#YOU

Film and Media Academy Skills Workshops in filming, editing & scripting

#ENTRY

4 x Grade 3s, including English Language or Literature. Please note you will also resit your Maths & English if they are not a 4 or above

Please see our course leaflet at www.runshaw.ac.uk for more information.

For guidance about what careers subjects can lead on to please access nationalcareers.service.gov.uk

UAL Level 3

Creative Media Production

What will I learn?

This course allows you to discover your creative flair, develop practical skills and lead on to a career in the creative media industries. It links theory and understanding, with real media practice. You will study:

- practical camera work, soundtrack creation and editing production
- production management, pre-production, scripting and storyboarding
- advertising campaigns and music video production
- digital graphic design and motion graphics
- film studies, Documentary Film Making and Social Media Projects
- photography, image editing and layout design
- client based work, multi-camera productions, studio work and practical skills

You should also have an active interest in the media, in particular film and television production, as you will be encouraged to seek work experience with local industries.

How will I be assessed?

You will work on a variety of practical assignments that reflect media industry practice. Assessment is mainly through a range of practical projects that include analysis, planning and production.

What enrichment can I look forward to?

You will get the chance to participate in Runshaw TV, our college video production company. Through Runshaw TV we have many internal and external opportunities to work with local clients and businesses. We run enrichment opportunities trying out video production, editing and visual effects workshops. There are also a variety of visits to The National Science and Media Museum in Bradford, television studios and film exhibitions along with industry related UK and European trips.

What progression is there?

Progression routes lead into different media sectors such as: Film & TV, photography, broadcast journalism, games design, animation and advertising and marketing. Students can move on to a more specialised degree programme, a media based apprenticeship, or straight into working with media companies.

#Future

Camera Operator

Graphic Designer

Photographer

Content Creator

Video Editor

#YOU
Practical Based
Projects
RunshawTV
enrichment
Industry Standard
Equipment

#ENTRY
5x Grade 4s,
including
English & Maths

Please see our course leaflet
at www.runshaw.ac.uk
for more information.
For guidance about what careers
subjects can lead on to please access
nationalcareers.service.gov.uk

Music & Performing Arts

The Professional Performance Programme

Full time courses in · Acting · Dance · Musical Theatre

PPP - UAL Level 2 **104**

PPP - UAL Level 3 **105**

PPP - UAL Level 2 & 3 **106**

Advanced Musicianship Programme (AMP) **107**

Here at Runshaw, we have a fantastic reputation for consistent success in the Performing Arts and are viewed by many as THE place to go if you are serious about your performance training. From the quality of our public shows, to the prestigious dance and drama schools that our students progress to, studying here guarantees you high-level training at one of the most successful colleges in England.

Our Professional Performance Programme will allow you to develop and extend your skills in Acting, Dance or Musical Theatre. You will have the opportunity to perform at the Edinburgh Fringe Festival, to dance at an international competition in Barcelona, and to watch a range of shows in Manchester, Liverpool and London's West End.

Please see our course leaflets at **www.runshaw.ac.uk** and press the **'Apply' button**. For guidance about what careers subjects can lead on to please access **nationalcareers.service.gov.uk**



UAL Level 2

The Professional Performance Programme

What will I learn?

The PPP Level 2 is an exciting, practical training course for students who want to develop their performance skills and pursue a career in the performing arts. You will learn fundamental techniques in acting, dance and singing, along with how to create your own performance material.

What enrichment can I look forward to?

A wide range of exciting enrichment activities are available to you on the PPP:

- perform at the Edinburgh Fringe Festival
- drama school auditions held at Runshaw
- workshops from visiting professionals
- a wide range of cross-college shows in dance, drama and musical theatre
- become a member of the Runshaw Dance Academy and compete in the Barcelona Dance Grand Prix

What progression is there?

A high proportion of our students move on to prestigious institutions. In recent years, 75% of the students who applied gained places at accredited dance and drama schools. No other college in the North West can match these statistics.

Some of the places that our students have progressed to include:

- Royal Academy of Dramatic Arts (RADA)
- London Academy of Music and Dramatic Art (LAMDA)
- Mountview Academy of Theatre Arts
- Rose Bruford College
- Royal Central School of Speech and Drama
- Liverpool Institute of Performing Arts (LIPA)
- Royal Conservatoire of Scotland
- Royal Welsh College of Music and Drama

#Future

Actor

Choreographer

Dancer

Musical Theatre Performer

Teacher

#YOU

Drama school auditions

Regular workshops
Dance Academy

#ENTRY

4x Grade 3s,
please note you
will also resit your
Maths & English if
they are not a 4 or
above

Please see our course leaflet
at www.runshaw.ac.uk
for more information.

For guidance about what careers
subjects can lead on to please access
nationalcareers.service.gov.uk

UAL Level 3

The Professional Performance Programme

What will I learn?

The Professional Performance Programme (PPP) is a challenging and rewarding course that is only available at Runshaw. It offers intensive, high-quality training for motivated students who want to pursue careers in the performing arts. Whereas A Levels focus more on theory than practical work, the PPP teaches hands-on performance skills and thus gives students a much better chance of passing auditions for prestigious dance, drama and musical theatre schools.

How will I be assessed?

You will take part in a number of projects over the two years. Most assessments last for six - eight weeks and consist of skills classes where you are taught relevant techniques, followed by development sessions where you apply those techniques and perform in front of a live audience.

You will also complete project books and evaluations for some of the practical work that you have done on the course. All of these will take the form of coursework as there are no written exams. On completion of the course, you will gain an Extended Diploma from the University of the Arts London.

What enrichment can I look forward to?

- perform at the Edinburgh Fringe Festival
- drama school auditions held at Runshaw
- workshops from visiting professionals
- a wide range of cross-college shows in dance, drama and musical theatre
- become a member of the Runshaw Dance Academy and compete in the Barcelona Dance Grand Prix

What progression is there?

A high proportion of our students move on to prestigious institutions. In recent years, 75% of the students who applied gained places at accredited dance and drama schools. No other college in the North West can match these statistics.

#Future

Actor

Choreographer

Dancer

Drama Therapist

Director

Singer

#YOU

Unique to Runshaw

Superb
progression

Amazing
opportunities

#ENTRY

5x Grade 4s,
including English
& Maths, plus a
live audition

Please see our course leaflet
at www.runshaw.ac.uk
for more information.

For guidance about what careers
subjects can lead on to please access
nationalcareers.service.gov.uk

UAL Level 2 & 3

The Professional Performance Programme

Three Pathways

When you choose to train on the PPP, you will need to decide which of the three specialist pathways you would like to follow:

PPP: **Dance**

On this pathway, you will be encouraged to develop your skills in a range of dance styles, along with one acting and one singing class each week. Ballet sessions will help you to develop your technique throughout the two years, along with classes in jazz, commercial, and urban dance. You will study different approaches to contemporary dance, and will be taught to choreograph your own material. You will also take part in major dance shows to public audiences with an opportunity to showcase your own choreography.

PPP: **Acting**

This pathway focuses primarily on acting, with some dance and singing technique. You will develop your technique in a range of styles, from naturalism through to physical theatre and classical performance. You will learn how to direct actors in a play and to work on a touring production, performing an adapted Shakespeare play at fifteen high schools in one week. The Acting pathway culminates in a major show performed for a public audience. There is also a strong focus on audition preparation in order to maximise your chances of progressing to one of the prestigious performing arts institutions.

PPP: **Musical Theatre**

The Musical Theatre pathway offers roughly equal levels of training in the three disciplines of acting, dance and singing. There is a focus on vocal technique and acting through song, along with technique classes in ballet, jazz and commercial dance. Acting classes cover naturalism and classical theatre. You will learn to present a touring show, performing a Theatre-For-Children piece at a number of local primary schools. In the second year, all students take part in a full-length Musical Theatre show for a public audience. There is also a strong focus on audition preparation in order to maximise your chances of progressing to one of the prestigious performing arts institutions.

Please see our course leaflet
at www.runshaw.ac.uk
for more information.
For guidance about what careers
subjects can lead on to please access
nationalcareers.service.gov.uk

UAL Level 3 Advanced Musicianship Programme

Runshaw's Advanced Musicianship Programme (AMP) is a full-time course aimed at developing student's abilities in music performance and production, as well as nurturing a culture of creativity and experimentation in preparation for progression onto prestigious higher education destinations or into work in the modern music industry.

As a music student at Runshaw you will enjoy our superb industry-standard music facilities, including a specialist music rehearsal studio with a grand piano, as well as four spacious, well-equipped practice rooms. You will also have access to our newly equipped recording studio and Mac suites, running top of the range music software such as Pro Tools, Ableton Live and Sibelius.

You will be taught by a range of exceptional teachers, many of whom are graduates of leading conservatoires and currently work as professional musicians.

What will I learn?

As a student on the AMP, you will develop your skills in performance, recording, mixing, mastering and the music business. You will complete industry-standard projects culminating in professional standard products such as a concert or studio recording,

perform as a soloist and ensemble member in a wide range of genres, and work with performance and technology in creative and explorative ways to find your unique musical voice.

How will I be assessed?

Assessments take place throughout the year through practical project-based assignments. There is no exam, and your assessment is 100% coursework. Every task will be part of an industry-standard project. You will propose, research, develop and evaluate a final project at the end of each year which will decide your final grades. Your work will be graded, Pass, Merit, High Merit or Distinction, where a Distinction is equivalent to three A's at A-Level. At the end of your qualification, you will achieve a UAL Level 3 Extended Diploma in Music Performance and Production.

What progression is there?

Our Music students in recent years have progressed to some of the best music colleges in the UK, including the RNCM, Birmingham Conservatoire, Durham University, Leeds Conservatoire and LIPA.

#Future

Performer

Composer

Arranger

Recording Engineer

Producer

#YOU

Runshaw Music
Academy

Free 1:1 Instrumental
Tuition

Specialist Workshops &
Masterclasses

Grade 5+ Theory
Support

#ENTRY

Successful Audition
& Interview

5x GCSE Grade 4
and above including
GCSE Music or
equivalent (e.g. BTEC,
ABRSM Practical &
Theory)

Please see our course leaflet
at www.runshaw.ac.uk
for more information.

For guidance about what careers
subjects can lead on to please access
nationalcareers.service.gov.uk

Public Services

Public Services BTEC Level 1 **110**

Public Services BTEC Level 2 **111**

Protective Services (Uniformed) BTEC Level 3 Extended **112**

Social Sciences BTEC/WJEC Level 3 **113**

A vocational Public Services course at Runshaw is a fantastic pathway into the Public Services. Whether it is furthering your knowledge at University or going straight into employment, our Public Services courses will take you where you want to go!

All our courses are exciting and wide-ranging as we want you to leave multi-skilled and aware of all the opportunities that exist within the industry.

Please see our course leaflets at **www.runshaw.ac.uk** and press the **'Apply' button**. For guidance about what careers subjects can lead on to please access **nationalcareers.service.gov.uk**



#future

Police Officer

PROGRAMME / OFFICE
01772 642020
SAFE GUARDING
HELPLINE
Contact in case of the
safeguarding help you
01772 644377
2

BTEC Level 1 Public Services/Sport

What will I learn?

On this course you will be looking at a balance of subjects from dealing with major incidents to learning how to coach your peers in a sport of your choice. This is a pathway to get you to your wanted destination. With a weekly practical session where we look at the leadership qualities needed to lead a group of peers effectively, you will be able to take your skills set forward to your future course in either Public services or Sport.

How will I be assessed?

Assessment takes place through coursework, practical activities and continual assessment throughout the year. This may include some external assessments.

What enrichment can I look forward to?

- team building activities
- outdoor pursuit activities
- visits to various Armed Forces establishments
- voluntary work
- fundraising activities

There will also be the opportunity to attend a residential trip as part of your assessment and learn new skills such as team working.

What progression is there?

Once you have successfully completed this course you may be able to progress in college or onto employment in a range of uniformed public services/non-uniformed services.

#Future

Armed Forces

Border Force Officer

Fire and Rescue

Personal Trainer

Police Officer

Sports Coach

#YOU

Annual trips
Public Services
guest speakers
Outdoor pursuits

#ENTRY

1x Grade 3,
1x Grade 2 and
Maths or English
Language at
Grade 2

Please see our course leaflet
at www.runshaw.ac.uk
for more information.

For guidance about what careers
subjects can lead on to please access
nationalcareers.service.gov.uk

BTEC Level 2

Public Services

#Future

Armed Forces

Border Force Officer

Police Service Officer

Prison Officer

Probation Officer

What will I learn?

The course is delivered through a mixture of practical, theoretical, and work-related tasks and activities where you get the chance to study many different aspects of all the public services, meet real life staff and officers, ask questions, and get the advice and support you need to be able to join them. The subjects you will study are interesting and fun and will enable you to really excel in both academic and practical ability.

You will learn about:

- employment opportunities
- teamwork skills
- expedition skills
- security in the services
- crime and its effects
- health and fitness
- emergency responses to incidents

In this safe and supportive environment, you will discover things about yourself that you never knew existed!

As part of the course you will also study English and Maths to develop your employability skills.

How will I be assessed?

The course is assessed continually throughout the year by coursework, and there will also be an exam for Unit 1.

What enrichment can I look forward to?

- outdoor pursuit activities
- residential trips
- The Duke of Edinburgh's Award scheme
- Sports Academy
- teambuilding
- fundraising
- voluntary work

What progression is there?

Successful completion of this course may lead to progression onto a Level 3 course, employment or training.

#YOU

Enhance your employability

Residential trips

Expert teachers

#ENTRY

4x Grade 3s,
please note you
will also resit your
Maths & English if
they are not a 4 or
above

Please see our course leaflet
at www.runshaw.ac.uk
for more information.
For guidance about what careers
subjects can lead on to please access
nationalcareers.service.gov.uk

BTEC Level 3 Extended Protective Services (Uniformed)

What will I learn?

You can expect an engaging course with an industry focus delivered by staff with recent industry experience. The course is made up of a wide subject base including the study of major incidents, criminology and expedition skills, and law and the legal system.

The core curriculum will give you an underpinning knowledge in a wide range of relevant and up to date public sector areas that include:

- leadership
- politics
- discipline
- crime and its effects on society
- health and fitness

How will I be assessed?

The course is 80% theory and 20% practical. You will participate in the practical sessions, which may include a residential, in order to fulfil the requirements of the course.

All assessment is via coursework, either in the classroom, during activities in sports facilities, or outdoors.

What enrichment can I look forward to?

Students will have a wide range of opportunities to develop their knowledge of careers and employability skills. Previously students have experienced an exciting range of activities and benefited from a range of speakers from the uniformed public services. They have also enjoyed a wide variety of up to date industry specific activities with all the uniformed services.

What progression is there?

A wide range of careers are available to you on completion of the course, including, uniformed Public Services such as Police, Fire and Rescue, Ambulance, Prison and Armed Forces, Customs and Excise, or even within the private security industry. Many students also go on to university after successfully completing this course.

#Future

Armed Forces

NHS Worker

Police Officer

Prison Officer

Social Worker

#YOU
Police training
Visits to the Houses
of Parliament
Self-defence
classes

#ENTRY
5x Grade 4s,
including English
& Maths

Please see our course leaflet
at www.runshaw.ac.uk
for more information.
For guidance about what careers
subjects can lead on to please access
nationalcareers.service.gov.uk

BTEC/WJEC Level 3

Social Sciences

What will I learn?

The course content relates to the three main subject areas of Applied Law, Criminology and Applied Psychology. You can expect a deeply interesting, engaging and contemporary course that is delivered by staff who have extensive and highly relevant vocational experience.

Year 1 consists of Applied Law, where you will study Dispute Solving in Civil Law and Investigating Aspects of Criminal Law and the Legal System, Applied Psychology, where you will study Psychological Approaches and applications and conducting psychological research, and Criminology, where you will study the changing awareness of crime and criminological theories.

Year 2 will build upon your previous knowledge base from Year 1 and you will study Applying the Law and Aspects of Tort. Within the area of Applied Psychology, you will study Health Psychology and Introduction to Psychopathology, and for Criminology, you will study Crime Scene to Courtroom, and Crime and Punishment. The course will also develop and further enhance your written and oral communication skills, research and

critical thinking skills as well as creative thinking skills. In addition, you will also acquire highly relevant leadership skills and qualities that will vastly improve your future employability prospects.

How will I be assessed?

For all three main academic areas the method of assessment will include traditional external examinations, controlled assessments and assignments.

What enrichment can I look forward to?

During the programme, you will experience outstanding enrichment ranging from guest speakers to study tours in the UK and overseas.

What progression is there?

Successful completion of the course will allow direct entry to a Law, Criminology or Psychology (or related subject) degree at university, or a combination of these subject areas. This will then significantly contribute to future careers such as a Solicitor, Barrister, Criminal Intelligence Analyst, Police Officer, Probation Officer or even a Psychologist.

#Future

Criminologist

Intelligence Analyst

Journalist

Police Officer

Psychologist

Social Worker

#YOU

Allows for
progression onto
excellent University
Degrees

Provides excellent
employability
skills

#ENTRY

5x Grade 4s,
including English
& Maths

Please see our course leaflet
at www.runshaw.ac.uk
for more information.
For guidance about what careers
subjects can lead on to please access
nationalcareers.service.gov.uk

Science

Applied Science BTEC Level 3 **116**

A vocational Science course at Runshaw is a fantastic pathway into the Science industries. Whether it is furthering your knowledge at university or going straight into employment, our Science course will take you where you want to go!

All our courses are exciting and wide-ranging as we want you to leave multi-skilled and aware of all the opportunities that exist within the industry.

Please see our course leaflets at **www.runshaw.ac.uk** and press the '**Apply**' button. For guidance about what careers subjects can lead on to please access **nationalcareers.service.gov.uk**



BTEC Level 3 Applied Science

#Future

Biomedical Scientist

Marine Biologist

Pharmacist

Radiographer

Veterinary Nursing

What will I study?

This course develops your understanding of scientific theory and skills, and coupled with experimental techniques helps you to be successful in either employment or at university.

You will study a wide range of scientific subjects including:

- Human Physiology
- Medical Physics
- Inorganic Chemistry
- Practical application and research

Throughout the course you will have the opportunity to perform a variety of experimental work, and will also learn how to work safely within a laboratory environment and to use Maths and statistics to analyse experimental data.

How will I be assessed?

The course will be assessed by a combination of exam based units and assignments. During the exam units you will be tested on both your scientific knowledge and understanding from biology, chemistry and physics as well as your practical skills.

The remainder of the course will be assignment based units, whereby you will complete a variety of assessed tasks including practicals, written reports and research tasks.

What enrichment can I look forward to?

Enrichment opportunities include guest speakers, science society, eco society, and completing Crest projects. In addition, students also have the opportunity to complete a scientific based work placement where they can apply their understanding in the workplace and explore potential career pathways.

What progression is there?

Students can progress directly into laboratory-based work, such as a lab technician, or other careers where a science qualification is required e.g. Dental Nursing or Pharmaceutical Researcher. Many of our students also progress to great universities to study a wide variety of courses.

#YOU

Wide range of destinations
Industry focus
Inspirational teaching

#ENTRY

4x Grade 4s,
including two
Grade 4s in
Science

Please see our course leaflet at www.runshaw.ac.uk for more information.

For guidance about what careers subjects can lead on to please access nationalcareers.service.gov.uk



Sport

Sport BTEC Level 2 **120**

Sport and Exercise Science BTEC Level 3 **121**

Sport BTEC Level 3 **122**

A vocational Sport course at Runshaw is a fantastic pathway into the sport and leisure industry. Whether it is furthering your knowledge at university or going straight into employment, our Sports courses will take you where you want to go!

All our courses are exciting and wide-ranging as we want you to leave multi-skilled and aware of all the opportunities that exist within the industry.

Please see our course leaflets at **www.runshaw.ac.uk** and press the '**Apply**' button. For guidance about what careers subjects can lead on to please access **nationalcareers.service.gov.uk**



BTEC Level 2 Sport

What will I learn?

This course is aimed at students who wish to progress to study Sport, PE Teaching, Sports Therapy, Sports Coaching, or alternatively go into employment. Students are taught by a wide range of exceptionally qualified staff, including professional and semi-professional athletes who have worked in elite level sport.

Study areas include:

- Anatomy & Physiology
- Fitness for Sport & Exercise
- The Sports performer in Action
- Leading Sports Activities
- The Mind & Sports Performance
- Practical Sport
- Training & Fitness
- Sports Injuries

How will I be assessed?

Assessment methods are varied to meet the needs of all students and to ensure a wide variety of skills are developed. In sport we use a state-of-the-art online system to hand in and to mark student work.

Assessments include:

- exams
- reports
- essays
- presentations
- interviews
- practical/observation

What enrichment can I look forward to?

Students can experience an exciting range of activities. Some examples are:

- sports and activities across the college
- work experience placement
- trips to Body Power, ice skating and bowling
- Jump Nation
- Rock and River outdoor activity centre

What progression is there?

If you successfully complete this course and have an excellent attendance record, you could progress in college, gain employment or an Apprenticeship.

#Future

Gym Manager

Medic

Physiotherapist

Sports Coach

Sport Development Officer

#YOU

Work Experience
Sports Academy
Outstanding facilities

#ENTRY

4x Grade 3s,
please note you
will also resit
your Maths &
English if they
are not a 4 or
above

Please see our course leaflet
at www.runshaw.ac.uk
for more information.

For guidance about what careers
subjects can lead on to please access
nationalcareers.service.gov.uk

BTEC Level 3 Sport & Exercise Science

#Future

Physiotherapist

Nutritionist

PE Teacher

Personal Trainer

Sport and Exercise
Psychologist

What will I learn?

Students are taught by a wide range of exceptionally qualified staff, including professional and semi-professional athletes who have worked in elite level sport.

Throughout the Sport & Exercise Science course you will explore:

- sports massage
- sport psychology
- exercise physiology
- practical sport
- sports nutrition
- specialised fitness training
- functional anatomy
- sports injuries
- biomechanics
- sports coaching

The course consists of 80% theory and 20% practical to support progression into university and employment.

How will I be assessed?

Assessment methods are varied to meet the needs of all students and to ensure a wide variety of skills are developed. In sport we use a state-of-the-art online system to hand in and to mark student work.

Assessment includes:

- experiments
- reports
- essays
- presentations
- interviews
- practical/observation

What enrichment can I look forward to?

Students can experience an exciting range of activities. Some examples are:

- sports and activities across the college
- sports science trip to UCLan
- work experience placement
- bowling and Jump Nation

Guest speakers have included a practicing physiotherapist providing lectures and practical sessions in anatomy, sports massage and sports injuries, as well as a variety of industry standard sports coaches.

#YOU

Sport teams
Amazing facilities
Fantastic support

#ENTRY

5x Grade 4s,
including English,
Maths and
Science

Please see our course leaflet at www.runshaw.ac.uk for more information.
For guidance about what careers subjects can lead on to please access nationalcareers.service.gov.uk

BTEC Level 3 Sport

What will I learn?

This course is aimed at students who wish to progress to study Sport, PE Teaching, Sports Therapy, Sports Coaching, or alternatively go into employment. Students are taught by a wide range of exceptionally qualified staff, including professional and semi-professional athletes who have worked in elite level sport.

Study areas include:

- Anatomy & Physiology
- Fitness for Sport & Wellbeing
- Rules and Regulation of Officiating
- Coaching for Sports Performance
- Practical Sport Performance
- Sports Leadership
- Application of Fitness Testing
- Sport Psychology

How will I be assessed?

Assessment methods are varied to meet the needs of all students and to ensure a wide variety of skills are developed. There are two units within each year that are externally assessed.

Assessments include:

- exams
- reports
- essays
- presentations
- interviews
- practical/observation

What enrichment can I look forward to?

Students can experience an exciting range of activities. Some examples are:

- Barcelona trip in March
- Sports and activities across the college
- Work experience placement
- Rock and River outdoor activity centre

What progression is there?

On successfully completing the course lots of our students progress on to university degrees in PE Teaching, Sport Coaching and Sports Science courses. Alternatively, there are other pathways, employment in this sector or Apprenticeships.

#Future

Gym Manager

Nutritionist

PE Teacher

Sports Coach

Sports
Physiotherapist

#YOU

100% achievement

Work experience
opportunities

Summer coaching
camp abroad

#ENTRY

5x Grade 4s
including English
and Maths

Please see our course leaflet
at www.runshaw.ac.uk
for more information.

For guidance about what careers
subjects can lead on to please access
nationalcareers.service.gov.uk



Tourism & Chef Skills

Travel, Tourism & The Visitor Economy NCFE Level 2 **126**

Tourism Management (including Cabin Crew) NCFE Level 3 **127**

Chef Diploma C&G Level 2 **128**

A vocational Tourism or Chef course at Runshaw is a fantastic pathway into the Tourism, Hospitality and Catering industries. Whether it is furthering your knowledge at university or going straight into employment, our Tourism and Chef courses will take you where you want to go!

All our courses are exciting and focus on industry expectations ensuring you are confidently skilled and aware of all the opportunities that exist within the industry.

Please see our course leaflets at **www.runshaw.ac.uk** and press the '**Apply**' **button**. For guidance about what careers subjects can lead on to please access **nationalcareers.service.gov.uk**



Level 2 Travel, Tourism & The Visitor Economy

What will I learn?

Are you interested in travel, events, festivals, dining out, visiting museums and tourist attractions? If yes, then the Travel, Tourism and Visitor Economy Course could be for you!

The tourism industry is incredibly valuable to the UK economy, and by 2025 it is estimated it will be worth £257bn and employ 3.8 million people. Tourism is not just about holidaying but much more - Ecotourism, Cultural Tourism, Business, Medical Tourism, Religious Tourism, Domestic Tourism, Outbound and Inbound Tourism.

This means there are jobs in travel, aviation, cruise, tourist attractions, sport, tour operators, travel agents, hotels, events, festivals, conferences and hospitality.

Many of the most successful companies from around the world are tourism companies, including Disney, Tui, Marriott, Hilton, Merlin Entertainments, Bassett events, Royal Caribbean, Centre Parcs and Emirates.

During this one-year course you will study the UK Travel & Tourism Industry, Promotions in Tourism, Airlines and Airports, Popular UK Destination, Customer Service and Work Experience in Tourism.

How will I be assessed?

The course is 100% coursework therefore we have no exams, and you will have an assignment to complete each week, so organisation and time management skills are key. We will assess you using written work, presentations (in different settings), Blogs, Vlogs, role plays and group work.

What enrichment can I look forward to?

We have a varied enrichment programme to help you get to know the people in your class, develop your personal skills and get to know more about the tourism industry. This includes numerous trips in the UK, plus one overnight residential, team building, and enterprise activities to develop business skills.

What progression is there?

You can progress onto our Level 3 Tourism Management course, an apprenticeship, or secure a customer facing position within travel and tourism, hospitality, conference and events.

#Future

Events Assistant

Holiday Representative

Hotel Receptionist

Social Media

Tourism Assistant

Travel Advisor

#YOU

**Travel Pod – our
onsite Travel Agency
Mock Aircraft
Superb Employment
Opportunities**

#ENTRY

**4x Grade 3s.
Maths or English
Language at
Grade 3 and
Grade 2 in
the others**

Please see our course leaflet
at www.runshaw.ac.uk
for more information.

For guidance about what careers
subjects can lead on to please access
nationalcareers.service.gov.uk

Level 3 Tourism Management

What will I learn?

3.1 million people are currently employed in tourism in the UK and the industry is worth £126.9bn! Our course is designed to equip you with the knowledge and skills necessary to become a successful employee within this dynamic industry.

The course consists of a variety of modules which provide you with an overview of the different sectors of the industry, such as digital marketing, events, cabin crew, business, cruise, customer service, storytelling, tour guiding and environmental tourism.

As part of your course you will complete six weeks of work experience in a tourism, event, or hospitality business. This is an amazing opportunity to enhance your subject knowledge, develop important employment skills and maybe even secure a part time job!

Also on offer is our very own travel agency 'The Travel Pod', run in association with Travel Counsellors. You will have the fantastic opportunity to work in a customer facing environment whilst gaining recognised retail industry qualifications!

How will I be assessed?

We use a variety of innovative assessment methods to develop your

knowledge and prepare you for a career in the tourism industry.

These include:

- written reports/assignments
- blog posts
- industry case studies
- group discussions
- role plays
- practical observations
- academic posters
- virtual reality

What enrichment can I look forward to?

- team building activities
- national airport trips
- numerous UK visits
- European city trip
- Airline cabin crew training at an elite UK facility

What progression is there?

Many of our students progress onto university or apprenticeships, before starting careers in Management for world recognised companies; or you can go straight into customer facing roles within tourism, hospitality, events or travel.

#Future

Cabin Crew

Cruise Concierge

Digital Marketing

Events Planner

Visitor Experience Manager

#YOU

Travel Pod – our onsite Travel Agency
Industry placement
Superb employment opportunities

#ENTRY

5x Grade 4s, including English & Maths

Please see our course leaflet at www.runshaw.ac.uk for more information.
For guidance about what careers subjects can lead on to please access nationalcareers.service.gov.uk

C&G Level 2 Chef Diploma

#Future

Catering Supervisor

Chef Pâtissière

Commis Chef

Conference and
Banqueting Chef

What will I learn?

You will gain a wealth of knowledge in both practical cookery sessions and catering theory classes. Areas you will cover are: meat & offal, poultry, stocks, soups, sauces, fish, shellfish, pasta, rice, grains, pastry products, as well as Health & Safety and special diets.

Students will also be given an opportunity to practice their new skills in the Chef School dining room, 'The Blue Room'.

We work extremely closely with employers, and all students will take part in a block work placement, and during your first week you will undertake a basic food hygiene certificate - achieving from the very start.

How will I be assessed?

Assessment on the programme is continual. There are practical exams at the end of each unit married up with theory tests, these may be in the form of written assignments or short answer questions.

What enrichment can I look forward to?

- meet industry experts - guest chefs, managers and bakers
- opportunities to gain work experience in restaurants and event catering
- national competitions
- careers conference gaining valuable employer advice
- visiting acclaimed restaurants, meeting the team and experiencing off the curriculum culinary opportunities
- visits and residential trips - e.g hotels, large event stadiums, restaurants, organic farms, food manufacturers, food markets and cocktail bars
- CV building advice which will help you secure valuable part time employment to complement your studies

What progression is there?

After acquiring the key technical skills for the industry you will have the choice of taking a full time job role or an apprenticeship. You may wish to continue within the school and study further about the Tourism industry.

#YOU

**Real Experience
Masterclasses
Superb resources
& equipment**

#ENTRY

**4x Grade 3s, please
note you will also
resit your Maths &
English if they are
not a 4 or above**

Please see our course leaflet
at www.runshaw.ac.uk
for more information.

For guidance about what careers
subjects can lead on to please access
nationalcareers.service.gov.uk



Visual Arts

Art and Design UAL Level 2 **132**

Art and Design UAL Level 3 **133**

Graphic Design UAL Level 3 **134**

A vocational Visual Arts course at Runshaw is a fantastic pathway into the creative industries. Whether it is furthering your knowledge at university or going straight into employment, our Visual Arts courses will take you where you want to go!

All our courses are exciting and wide-ranging as we want you to leave multi-skilled and aware of all the opportunities that exist within the industry. You will be provided with some art materials and print credit to use in lessons, and you will also be expected to provide some of your own art equipment, which can be purchased at college.

Please see our course leaflets at **www.runshaw.ac.uk** and press the **'Apply'** button. For guidance about what careers subjects can lead on to please access nationalcareers.service.gov.uk



UAL Level 2 Art & Design

What will I study?

In this one year course you will complete eight units, exploring a wide range of 2D, 3D and moving image media, techniques and processes, working through the design process, completing primary research from which you will create initial ideas, and then developing these into a final piece. You will use the work of other artists for inspiration, as well as analysing and evaluating your own art work. At the end of the course, you will complete a personal project for Unit 8, where you will write your own brief and start to select media, techniques and processes you have previously enjoyed. As part of the course you will also study English and/or Maths and will develop employability skills.

How will I be assessed?

By internally assessed coursework throughout the year and end of year external moderation.

Coursework includes both practical artwork and written analysis/evaluation where you will be expected to reflect on your own and other artists' work. Unit 8, a personal project, is assessed as Pass, Merit or Distinction, and this Unit 8 grade forms the whole qualification grade.

What enrichment can I look forward to?

Visits to museums and galleries, as well as organising an art exhibition for public viewing.

What progression is there?

Most students enter onto this course to enable them to progress on to the Level 3 Art & Design or Graphics course. You can also choose to progress onto other non-art Level 3 courses within the college, an Apprenticeship or employment.

#Future

Artist

Art Gallery Manager

Art Teacher

Illustrator

Interior Designer

Pattern Designer

#YOU

**Personal final
major project
100% Coursework
End of Year
Show**

#ENTRY

**4x Grade 3s, including
Art (or equivalent) or a
successful portfolio.
Please note you will
also resit your Maths
& English if they
are not a Grade 4
or above**

Please see our course leaflet
at www.runshaw.ac.uk
for more information.
For guidance about what careers
subjects can lead on to please access
nationalcareers.service.gov.uk

UAL Level 3 Art & Design

What will I study?

Over two years you will complete two units and be introduced to a broad range of materials, techniques and processes within a variety of specialist art areas, including drawing, printmaking, working with non-resistant materials, digital and traditional photography, textiles, surface pattern, computers in art, time based media and contextual studies. You will have access to fantastic facilities such as Mac suites, photography studios and darkroom, a 3D workshop, a print room, textiles workrooms and fine art studios. It is expected that as you move into Year 2, you will start to bias the nature of your practical work to align with your career goals, to enable you to create an in-depth portfolio. The course concludes with Unit 2, a personal Final Major Project, which is exhibited in the end of the year show.

How will I be assessed?

Through a portfolio of evidence which is internally and externally assessed and moderated. At the start of the course, you will be set theme based projects designed to develop visual language, research skills, 2D and 3D problem solving and critical and contextual awareness in Art & Design. In Year 1, you will complete Unit 1 in response to a theme set by the exam board, with work being presented and evaluated in exam conditions.

In Year 2, you will complete Unit 2, the Final Major Project. Units 1 & 2 are assessed as Pass, Merit or Distinction, each forming 50% of your grade.

What enrichment can I look forward to?

Gallery visits, external work placements, practical workshops, and trips to places of interest for gaining primary research.

What progression is there?

You can progress on to university to study a range of courses, including: Illustration, Textiles and Fashion, Theatre Design, 3D and Interior Design, Fine Art, Photography, Graphic Design, Animation and Games Design.

Art students develop many transferable skills, including communication, creative thinking, problem solving, organisation, time management and the ability to present well. Our students transform ideas into outcomes through in-depth research and develop attention to detail, fine motor skills and sensitivity. We encourage hard work, self-discipline and an ability to share ideas and work with others, all valuable skills for the world of work!

#Future

Architect

Art Therapist

Concept Artist

Conservator

Fine Artist

Printmaker

#YOU

Industry standard facilities

Multi-disciplinary

Personal final major project

#ENTRY

5x Grade 4s, including English and Art or Graphic Products/Textiles Technology

Please see our course leaflet at www.runshaw.ac.uk for more information.
For guidance about what careers subjects can lead on to please access nationalcareers.service.gov.uk

UAL Level 3 Graphic Design

What will I study?

Working with industry standard software in Apple Mac suites, you will explore and develop skills in a broad range of art and digital media, including typography, printmaking, moving image, digital manipulation/collage, contextual studies, and specialist digital illustration. Over two years you will complete six units and be taught techniques and processes in digital software such as Adobe Photoshop, InDesign, Illustrator, After Effects and Adobe XD; using these programmes to explore image manipulation, vector graphics and layout design, as well as exploring and experimenting with traditional art materials; especially how manual work can be combined with digital techniques.

The first year is focused on developing your knowledge of Graphic Design and its related industries, whilst the second year develops your depth of understanding in the areas of Graphics you wish to pursue as a career. The course concludes with Unit 6, a personal Final Major Project, where you will take control of your own learning and demonstrate your achievement by independently initiating, researching, completing and evaluating a final major project within your chosen professional context.

It differs from GCSE Graphics/Graphics Products in that it does not include 3D Design. If you have an interest in pursuing a career in Product or 3D related design, please see our UAL Level 3 in Art & Design.

How will I be assessed?

Through a portfolio of evidence which is internally assessed and externally moderated. At the start of the course, you will be set theme-based projects designed to develop visual language, research skills, 2D problem solving and critical and contextual awareness in Graphic Design. In Year 1, you will complete Units 1, 2 and 3 in response to a set vocational brief. In Year 2, you will complete Units 4 and 5, which again are in response to a set vocational brief, followed by Unit 6; the Final Major Project. Units 3 & 6 are assessed as Pass, Merit or Distinction, with Unit 6 forming 100% of your Extended Diploma grade.

What progression is there?

You can progress on to university to study a range of courses, including: Graphic Design, Animation and Games Design, Illustration and Photography. Some students also progress on to non-art related degrees, Apprenticeships and employment.

#Future

Art Director

Digital Illustrator

Graphic Designer

Marketing Manager

Web Designer

#YOU

iMac design rooms

Studio 22 live design briefs

Personal final major project

#ENTRY

5x Grade 4s, including English, Maths and Art or Graphic Products

Please see our course leaflet at www.runshaw.ac.uk for more information.

For guidance about what careers subjects can lead on to please access nationalcareers.service.gov.uk



How to **Apply**

1

Visit **www.runshaw.ac.uk**

2

Choose a course and
apply **online**

3

Attend your interview to
discuss your **options**

4

Register from May to attend
our Year 11 Subject Choice
Days in July

5

Receive your GCSE results
and attend our **enrolment**
days in August

Entry Requirements - General

For our A Level Programme our entry requirements are a minimum of 5x Grade 5, including Maths and English.

For our Advanced Vocational courses our entry requirements are a minimum of 5x Grade 4, including either Maths or English Language at Grade 4 or above, and no less than a Grade 3 in the other.

For our pre-Advanced courses our offer is usually a minimum of 4x Grade 3, including English and Maths.

Please note that any student not achieving a Grade 4 in GCSE Maths/English Language will resit these GCSEs alongside their main college course.

Specific Courses/ Subjects

Please note that some courses and subjects will have additional specific entry requirements or require DBS clearance to undertake placements. Information about this can be found on the Apply Portal and on your offer letter which you will receive after your interview.

**Please note that the following A Level subjects require a Grade 6 in English and/or Languages and/ or Maths and/or Science: English, Maths, Biology, Chemistry, Physics, Geology, French, German, Spanish, EPQ.*

Important Information

Disability and Equal Opportunities

Runshaw College is committed to equality of opportunity for all members of its community and we respect all students for their individuality, abilities and aspirations. We actively encourage applications from students with disabilities or learning difficulties and you will be given the support you need to achieve your full learning potential. If you need more information, please contact the college for a personal interview and discussion about how we can support you in your studies.

Financial Support

The 16-19 Bursary Fund is provided by the Government to assist students who face the greatest barriers to continuing in education because of financial difficulty. The Fund can assist students with the cost of getting to college and help meet the cost of any equipment or clothing for their course. A bursary of £1,200 a year can be paid to the most vulnerable students - in care, care leavers, young people in receipt of income support (or Universal Credit) and disabled young people in receipt of Disability Living Allowance (or Personal Independence Payments) who are also in receipt of Employment Support Allowance (or UC).

Free Meals

Some college students may be entitled to free meals. We will check your entitlement to these when you return your bursary application form and supporting evidence.

Information in the Prospectus

Courses are offered in good faith but Runshaw reserves the right to:

- cancel courses if they do not reach enrolment targets
- change the syllabus or the entry requirements of a course without prior notice
- alter the curriculum in response to political or local changes

Admissions

Runshaw may require applicants to provide, or allow access to, evidence of suitability for admission to a particular course. This may be a reference from a previous education institution, employer or doctor.

Students will be expected to:

- meet the entry criteria for their chosen course and provide proof of examination grades, a good record of achievement, a good record of attendance and a supportive reference
- meet the residency criteria laid down by the funding council or pay the appropriate course fee
- Where applicants have complex

or profound needs, a special Admissions Assessment will be undertaken to consider whether the college can offer suitable curriculum and support for the young person

- disclose any criminal conviction

Safeguarding

Runshaw College is committed to safeguarding and promoting the welfare of children and vulnerable adults and expects all staff to share this commitment.

Holidays in Term Time

To support our students, holidays during term time are not permitted or authorised. You can find the college term dates at: www.runshaw.ac.uk/life-at-runshaw/college-calendar/

Contact Us

If you would like any further information about any of the courses or activities included in our prospectus please contact:

Schools Liaison
Runshaw College
Langdale Road
Leyland
Lancashire
PR25 3DQ

Telephone: **01772 643000**
Email: welcometorunshaw@runshaw.ac.uk
Website: www.runshaw.ac.uk

How to get to **Runshaw**

Bus Routes to Runshaw

College buses provide easy transport to Runshaw from a wide surrounding area. These buses are timed to arrive at college at 8.50am and leave at 3.55pm. In addition to these, local bus services run regularly between Chorley, Preston and Leyland town centres, and students living in these areas can use these services throughout the day (a college bus pass is valid for one journey into college in the morning and one journey home in the afternoon on one bus route). A college bus pass may be purchased to cover the cost of the year's transport.

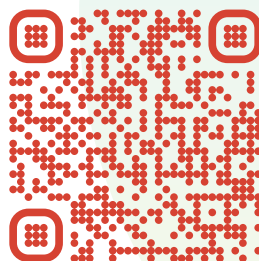


Find us on Social Media

Scan the QR to explore

Find out more about the subjects you might choose at Runshaw by following them on social media.

The college has over 80 subject-specific social media accounts which contain all the latest information and activities that our students take part in. Scan the giant QR on the right to be taken to our up-to-date web page which has all the details on it.



Download our app!

- Get all the latest news and notifications
- Keep up with all our social media
- Search our courses
- Apply online



RUNSHAW COLLEGE

Our Upcoming Open Events:

Saturday 23 September

Thursday 12 October

Tuesday 21 November

Wednesday 6 March

